



Universitetet
i Stavanger

FACULTY OF SCIENCE AND TECHNOLOGY

MASTER'S THESIS

Study program/specialization: Petroleum Engineering - Drilling & Well Technology	Spring semester, 2009 Open
Author: Morten Kartevoll (signature author)
Instructor: Erik Skaugen Supervisor(s): Arne Valland Singelstad and Tor Henry Omland	
Title of Master's Thesis: Drilling problems in depleted reservoirs	
ECTS: 30	
Subject headings: - Depleted zones - ECD - Wellbore pressure - Specific case history	Pages: 33 Stavanger, Date/year

Drilling problems in depleted reservoirs

Morten Kartevoll

Spring semester, 2009

Petroleum Engineering - Drilling & Well Technology

Universitetet i Stavanger



In collaboration with

StatoilHydro

StatoilHydro

Abstract

When drilling a well there are several factors involved governing the pressure measured downhole. Being able to predict and control these in addition to having an understanding of the formation being drilled makes it possible to drill in environments that were not possible to drill with yesterday's technology.

This paper gives an introduction to the rock mechanics of a formation and explains what parameters are involved at governing the bottomhole pressure in a well. Pore pressure prediction, fracture pressure estimation as well as a description of equivalent circulation density and the challenges of drilling in a pressure depleted formation are also discussed.

A case study from a field in the North Sea is included. This was the main motivation for writing this thesis. In order to look at a field case and draw conclusions based on observations require knowledge about what caused that which is observed. The case is a well drilled in the North Sea in 2006 which experienced a severe loss of circulation incident. No direct cause of this incident was found during an investigation performed by StatoilHydro. This paper looks at different possible causes with supporting evidence and presents a recommendation of what could be done to prevent similar incidents in the future.

All data from the field and the well has been anonymized after wishes from StatoilHydro and partners.

Table of contents

1. ACKNOWLEDGEMENTS	4
2. INTRODUCTION	5
3. THEORY	6
3.1 Rock mechanics	6
3.2 Pore pressure prediction	9
3.3 Fracture pressure prediction	9
3.3.1 Leak-off test (LOT) and extended leak-off test (XLOT)	10
3.4 Equivalent circulation density	11
3.5 Drilling in depleted zones	13
3.5.1 Heterogeneous depletion	13
3.5.2 Managed Pressure Drilling	15
3.6 Wellbore pressure	15
3.6.1 Fluid friction	16
3.6.2 Cuttings	17
3.6.3 Drillstring rotation and eccentricity	18
3.6.4 Tool joints	21
3.6.5 Lateral drillstring movement	21
4. CASE HISTORY - A LOSS OF CIRCULATION INCIDENT IN THE NORTH SEA	22
4.1 Underestimated depletion	22
4.2 Shear tension in the formation	24
4.3 Pack off	24
4.4 Stringer penetration	25
4.5 Drilling fluid properties	26
5. DISCUSSION	29
6. CONCLUSION	31
7. REFERENCES	32

1. Acknowledgements

I would like to thank Professor Erik Skaugen at UiS for all his help while I was writing my master thesis. I would also like to thank StatoilHydro for giving me the opportunity to use their facilities and giving me access to relevant data for my work. Special thanks go to Arne Valland Singelstad, Tor Henry Omland, Ståle Østensen and Frode Robberstad for helping me out with technical and theoretical questions and feedback.

2. Introduction

New oil and gas wells are becoming more challenging to drill. New technology and better understanding of new and existing reservoirs become available, pushing the envelope of what is technically possible and economically viable. When new technology makes difficult wells possible to drill, more data is needed. Better understanding of what affects the drilling process is crucial in order to make the operation as efficient and safe as possible

A lot of the new wells drilled today go into or through zones in the formation that have already been produced from. The reason for this could be that an existing reservoir needs to be drained from a different location in order to enhance the hydrocarbon recovery. Or it could be that a new reservoir located below an older one is discovered or has not been possible to reach before. Lower pore pressure than what used to be present is encountered and this gives rise to problems and potential risks that have to be dealt with.

When a formation is depleted from earlier fluid extraction, the operating window between the pore pressure and the fracture pressure for the section gets narrower. Due to these smaller tolerances, variations in drilling parameters will have a bigger impact on the downhole conditions. Knowing how different parameters will affect the downhole pressure is of great help. This aids in the design of a drilling program that can get a section drilled as a whole while minimizing the risk for operational hazards.

3. Theory

3.1 Rock mechanics

For prediction of formation behavior, models are needed to predict the stress, strain and pressure development in the wellbore. The simplest model, which assumes linear elastic and isotropic properties and no geological processes making any directional dependent tension, can be used as an analogy. In this model it is only the vertical tension, the overburden, which causes horizontal tensions, which are equal in all directions.

Stress is defined as force acting through a cross section. Depending on the orientation of the force to the cross section the stress is called normal stress or shear stress.

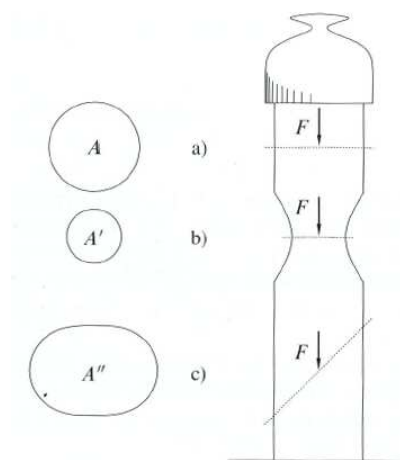


Fig 3.1: A force is shown going through three different cross sections. The planes a) and b) experience normal stress while c) has shear stress^[1].

Normal stress, denoted σ , is given by this equation^[1]:

$$\sigma = \frac{F}{A} \quad (1)$$

Shear stress, which is present in Fig. 3.1 at point c), is a decomposition of the force. The component acting normal on the cross section is the normal stress portion, while the component acting parallel with the cross section is the shear stress part, denoted τ ^[1].

$$\tau = \frac{F_P}{A} \quad (2)$$

Strain, ϵ , is defined as an elongation in positive or negative direction of a material due to the forces acting on it. Poisson's ratio is the strain in y direction divided by the strain in x direction, see Fig. 3.2. The two are calculated by the following equations^[1]:

$$\epsilon = \frac{L - L'}{L} = \frac{\Delta L}{L} \quad (3)$$

$$\nu = -\frac{\epsilon_y}{\epsilon_x} \quad (4)$$

The negative sign in equation (4) is used to maintain a positive sign convention for the Poisson's ratio.

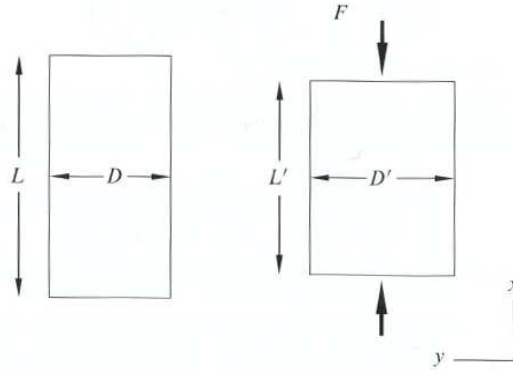


Fig 3.2: A body in two dimensions is shown where a force is applied, deforming the body. It becomes shorter in x direction and wider in y direction^[1].

Using Hooks law in a Cartesian coordinate system with the axes x, y and z gives the following equations^[1, 2]:

$$E\epsilon_x = \sigma_x - \nu(\sigma_y + \sigma_z) \quad (5)$$

$$E\epsilon_y = \sigma_y - \nu(\sigma_z + \sigma_x) \quad (6)$$

$$E\epsilon_z = \sigma_z - \nu(\sigma_x + \sigma_y) \quad (7)$$

E = modulus of elasticity

ν = Poisson's ratio

$\epsilon_x, \epsilon_y, \epsilon_z$ = relative change in length in directions x, y and z

$\sigma_x, \sigma_y, \sigma_z$ = formation stress in directions x, y and z

However, in rock mechanics we use other denotations for the formation tensions. σ_x, σ_y and σ_z will hereafter be denoted σ_H, σ_h and σ_v respectively, where σ_H is the largest horizontal stress, σ_h the least, and σ_v is the overburden.

We further assumed that the formation in question is a non porous one, like salt or granite. This means the overburden σ_v is given by the following^[2]:

$$\sigma_v = \rho_w g h_w + \rho_F g h \quad (8)$$

σ_v = overburden

ρ_w = density of seawater

h_w = sea depth

ρ_F = average density of the formation

h = depth, starting from the seabed

g = constant of acceleration (9,81 m/s²)

Given the statement that no geological process is to be taken into account the horizontal tensions σ_H and σ_h are equal and there is no change in lengths in these directions, so $\epsilon_x = \epsilon_y = 0$. By inserting this into Hook's law we get:

$$E\epsilon_x = 0 = \sigma_H - \nu(\sigma_h + \sigma_v) = \sigma_H - \nu(\sigma_H + \sigma_v) = (1-\nu)\sigma_H - \nu\sigma_v$$

$$\Rightarrow \sigma_H = \sigma_h = \frac{\nu}{1-\nu}\sigma_v \quad (9)$$

$$E\epsilon_z = \sigma_v - \nu(\sigma_H + \sigma_H) = \sigma_v - 2\nu\sigma_H = \sigma_v - \frac{2\nu^2}{1-\nu}\sigma_v$$

$$\Rightarrow \epsilon_z = \left(1 - \frac{2\nu^2}{1-\nu}\right)\frac{\sigma_v}{E} \quad (10)$$

Equations (9) and (10) give the horizontal tension in the formation and how much the formation have been squeezed together in vertical direction because of the overburden, respectively. As long as the assumptions made previously is applied to any formation, the horizontal tension in any direction will be equal to $\sigma_H = \sigma_h$.

If σ_H and σ_h are not equal, the coordinate system has to be arranged such that the axis are along the principal stresses. When this is done, the horizontal stress in any direction can be calculated.

If the formation is porous, the pores will most likely contain water with a (pore) pressure P_p . The pore pressure will reduce the vertical tension in the formation, because it is carrying some of the load from the overburden, and the change in tension is $\sigma_v - P_p$. Still having the assumption that there are no geological effects on tension, equation (9) will for a porous formation give this result:

$$\sigma_H - P_p = \sigma_h - P_p = \frac{\nu}{1-\nu}(\sigma_v - P_p)$$

$$\Rightarrow P_F = \sigma_H = \sigma_h = \frac{\nu}{1-\nu}(\sigma_v - P_p) + P_p = \frac{\nu}{1-\nu}\sigma_v + \frac{1-2\nu}{1-\nu}P_p \quad (11)$$

P_F = fracture pressure

P_p = pore pressure

The fracture pressure is the minimum pressure needed in the well to break or tear up the formation around the wellbore. Natural fractures present in the formation will be held shut by the horizontal stresses. If the fluid pressure is higher than the horizontal stress, which is the stress in the formation itself and the pore pressure, the fracture will open. This is also dependent on the fluids ability to get into the fractures, so if a good mud cake is present a higher fracture pressure will be seen than if an inferior one is.

3.2 Pore pressure prediction

Pore pressure (P_p) is an important parameter in rock mechanics as it will carry part of the total stresses in a porous, fluid-filled rock system. It's a well documented fact that porous and permeable formations obey an effective stress law^[1]:

$$\sigma'_p = \sigma_p - \alpha P_p \quad (12)$$

σ'_p = effective external hydrostatic stress

σ_p = external hydrostatic stress

α = Biot factor (≈ 1 in weak or unconsolidated formations)

The properties of the formation are governed by the effective stress, so it is important to know the P_p present. In a saturated formation, assuming that the fluid in the pores can migrate to the surface at the same rate as the rate of compaction, P_p will develop as a normal gradient governed by the weight of the fluid column^[1]:

$$P_{pn} = \int_0^D \rho_f(z)gz \quad (13)$$

P_{pn} = normal pore pressure

ρ_f = fluid density, dependent on salinity

z = depth

There are several different cases where the P_p does not follow the normal gradient. If the rate of sedimentation and compaction is higher than the migration rate for pore fluid it will lead to a higher P_p than what would be expected. Other reasons for having abnormally high P_p could be tectonic loading causing shear stress with associated increase in P_p and thermal or chemical processes leading to fluid expansion or generation respectively. However if the P_p is lower than expected this is often the result of pore fluid extraction from the formation (see section about drilling in depleted zones).

When P_p gradients are made, information about the formation fluids and tectonics are needed. Combined with information from adjacent wells such as; pressure readings, reservoir models, formation type and depletion factors, this help to create a predictive P_p gradient for the location of interest.

3.3 Fracture pressure prediction

To determine the smallest horizontal stress, σ_h , the formation is fractured and the pressure when the fracture closes is measured. To get reliable measurements it is important that the fractures have propagated far enough into the formation so that all factors/elements from the wellbore stresses can be neglected. For a vertical well this is obtained when the fracture length is two to three wellbore diameters. For a deviated well the fracture may have to travel farther away to encounter only the in-situ stresses due to a more complicated stress regime around the wellbore.

3.3.1 Leak-off test (LOT) and extended leak-off test (XLOT)

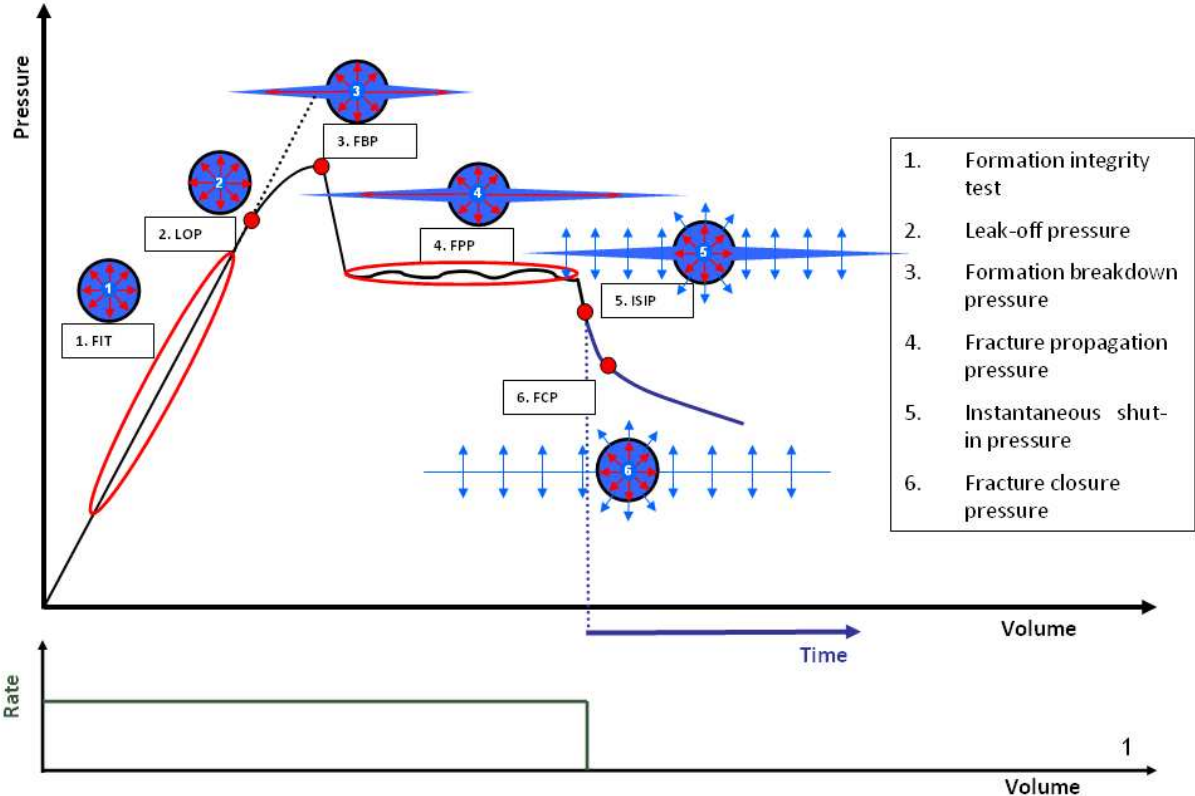


Fig 3.3: XLOT pressure vs volume/time graph with explanations. Courtesy: Torunn Beathe Gederaas, StatoilHydro.

Above in Fig. 3.3 is a graph showing how the different pressures are interpreted from a XLOT reading.

To get the data needed to make a predictive model for the fracture pressure of a formation a LOT or, XLOT, is needed. After drilling through the casing shoe and a few meters into virgin formation, the test is performed by closing off the annulus and pressurizing it with the mud pump. The first part of the pressurizing process, where no fluid is lost to the formation, gives a linear increase in pressure compared to the volume of fluid pumped. This line is called a formation integrity test (FIT) and the slope is primarily given by the compressibility of the drilling fluid. As the pressure rises a point is reached where a nonlinear increase in pressure is observed. This is referred to as the leak-off pressure (LOP).

The change in pressure increase is probably caused by a micro annulus created between the cement and the formation. This is often due to elastic enlargement of the borehole or an insufficient cement job, normally resulting in a leakage of drilling fluid. A normal leak-off test would be stopped at this point.

As pumping continues, an XLOT can be performed. The pressure now builds up more slowly, until the formation breakdown pressure (FBP) is reached. As the formation breaks at this point, cracks are made in the formation and an immediate pressure drop is observed as the drilling fluid leaks into these, or if a permeable formation is considered, into the formation

itself. The pressure drops until it becomes constant and the fracture propagation pressure (FPP) is obtained.

While still pumping drilling fluid, the cracks will continue to open more and more in a stepwise manner, hence the reason for the observed fluctuation in the FPP. After the FPP has been measured for a given volume of drilling fluid, typically around 1,5m³, the pumps are stopped. An immediate pressure drop due to the ceasing of the frictional pressure loss is observed and this is denoted as the instantaneous shut-in pressure (ISIP). The pressure in the well will continue to drop and the fracture closure pressure (FCP) is found. If the formation is permeable, the FCP is the breakpoint in the pressure vs. the square root of time curve. If the formation is impermeable the drilling fluid in the cracks is bleed off through a constant choke, and the FCP is the breakpoint in the pressure vs. flowback volume curve. These two interpretations should give compatible FCPs.

The FCP is interpreted as the σ_h and it is recommended to set this as the maximum value for the static mud weight, as static losses then will be omitted. The σ_h is usually found by using a relation model, with data from a LOT or XLOT as input. Finally the fracture pressure curve presented in the pressure plots is set as a value 5-10% higher than σ_h calibrated with other data available. The fracture pressure is usually set as the highest limit for the ECD in the well.

3.4 Equivalent circulation density

The equivalent circulation density can be interpreted as the density of a fluid, which in static conditions and at a depth of interest produces the same pressure as a given drilling fluid in dynamic conditions^[3].

ECD is presented as a dimensionless pressure gradient. In order to present the pressure drop in the wellbore as ECD it needs to be converted. This can be done by rearranging Eq. (12) with respect to ρ and adding the increase in pressure due to non static conditions:

$$ECD = \frac{\rho}{\rho_w} = \frac{P + \Delta P}{gh} \quad (14)$$

ECD = dimensionless number

ρ = density of a static fluid yielding the same pressure drop as a dynamic system (kg/l)

ρ_w = density of water (kg/l)

P = static hydraulic pressure (kPa)

ΔP = increase in pressure due to drilling operations (kPa)

g = constant of acceleration (9,81 m/s²)

h = TVD of point of interest (m)

The ECD gradient is often referred to as specific gravity (SG). That means the density of the hypothetical fluid is divided by the density of water as a reference. By doing this it makes calculations from SG to any other unit of density very easy, since the density used for water is 1000 kg / m³.

When calculating the theoretical pressure drop in an annulus, all the different contributing factors can be calculated one by one and then summed up in the ΔP term in Eq. (14). It must

be kept in mind that this will be an approximation of an approximation, since several of the different factors can and will influence each other.

The ECD is not necessarily largest at the bottom of the well, this is because ECD relies on the total pressure drop at a point in the well and the TVD of this point. This is illustrated in the following figure:

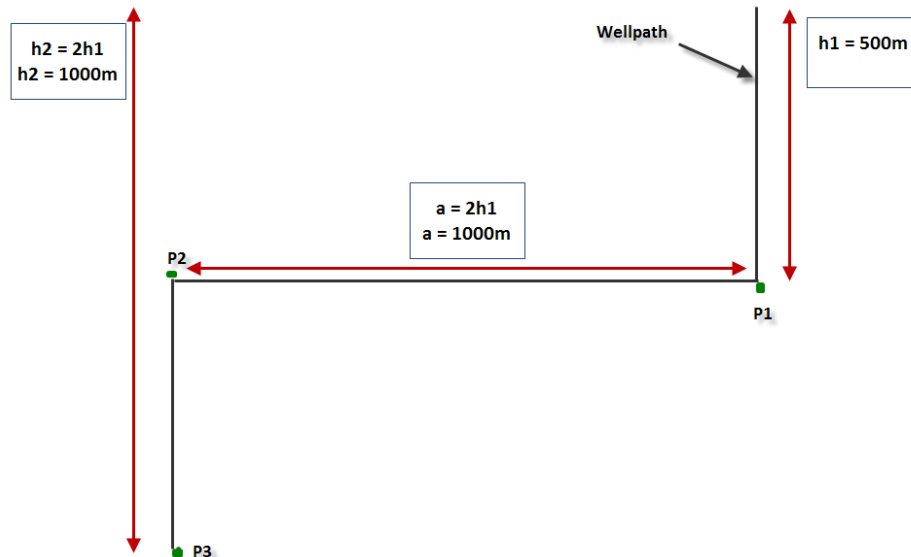


Fig 3.4: An imagined part of a well path with measurements.

Assuming figure 3.4 is part of a well path and there is only drillpipe and no BHA in the section illustrated. For simplicities sake it is also assumed a fluid density of 1000 kg/m^3 , a friction pressure drop of five bars per 500m of wellbore and the acceleration of gravity equal to 10 m/s^2 . The ECD can now be calculated for the points P1-P3:

P1

$$\text{Friction pressure loss: } P_{F1} = 500m \cdot \frac{0,5 \cdot 10^6 \text{ Pa}}{500m} = 0,5 \cdot 10^6 \text{ Pa}$$

$$\text{Static pressure: } P_{static1} = \rho g h_1 = 1000 \frac{\text{kg}}{\text{m}^3} \cdot 10 \frac{\text{m}}{\text{s}^2} \cdot 500m = 5 \cdot 10^6 \text{ Pa}$$

$$\text{ECD: } ECD = \frac{P_{F1} + P_{static1}}{g h_1} = \frac{(0,5 + 5) \cdot 10^6 \text{ Pa}}{10 \frac{\text{m}}{\text{s}^2} \cdot 500m} = \underline{\underline{1100 \frac{\text{kg}}{\text{m}^3}}}$$

P2

$$\text{Friction pressure loss: } P_{F2} = 1500m \cdot \frac{0,5 \cdot 10^6 \text{ Pa}}{500m} = 1,5 \cdot 10^6 \text{ Pa}$$

$$\text{Static pressure: } P_{static2} = \rho g h_2 = 1000 \frac{\text{kg}}{\text{m}^3} \cdot 10 \frac{\text{m}}{\text{s}^2} \cdot 1000m = 10 \cdot 10^6 \text{ Pa}$$

$$\text{ECD: } ECD = \frac{P_{F2} + P_{static2}}{g h_2} = \frac{(1,5 + 10) \cdot 10^6 \text{ Pa}}{10 \frac{\text{m}}{\text{s}^2} \cdot 1000m} = \underline{\underline{1150 \frac{\text{kg}}{\text{m}^3}}}$$

P3

$$\text{Friction pressure loss: } P_{F3} = 2000m \cdot \frac{0,5 \cdot 10^6 Pa}{500m} = 2 \cdot 10^6 Pa$$

$$\text{Static pressure: } P_{static3} = \rho gh_3 = 1000 \frac{kg}{m^3} \cdot 10 \frac{m}{s^2} \cdot 1000m = 10 \cdot 10^6 Pa$$

$$\text{ECD: } ECD = \frac{P_{F13} + P_{static3}}{gh_3} = \frac{(2 + 10) \cdot 10^6 Pa}{10 \frac{m}{s^2} \cdot 1000m} = 1200 \frac{kg}{m^3}$$

Table 3.1: Calculations showing how the ECD in a well is dependent on the true vertical depth of the well.

The calculations show that the ECD is higher at P2 than any of the other two points. This shows that the ECD is highly dependent on the well trajectory. As long as the well is being drilled with a constant slope, the ECD will be highest at the bottom, but when the inclination is changed the highest ECD will not necessarily be at the bottom. Regardless if the ECD is higher at the bottom or not, the total pressure will always be highest at the bottom (if the well deviation is at all depths equal to or less than 90 degrees). Due to this fact it is favourable to have the measuring device for down hole pressure placed as close to the bit as possible to get the most accurate ECD reading at this point.

3.5 Drilling in depleted zones

3.5.1 Heterogeneous depletion

Drilling in depleted zones can be very challenging. There are small margins between the P_p and fracture gradients. This means the pressure difference between static and dynamic conditions in the well has to be small, which put strict limitations on the mud weight and annulus pressure losses. The most challenging when drilling in depleted zones is, however, that the formations being drilled through are not homogeneous. There can be zones of significantly varying permeability. This means that when a reservoir is being produced, all these zones experience different degrees of depletion. There will always be some kind of communication between the zones for the pressure differences to even out through. However, the time needed for this is often too long to accommodate the differences made through years or decades of fluid extraction.

To illustrate this, and the effect on the drilling process, a simple diagram can be drawn, see fig 3.2. Some assumptions are made; the P_p is normal and 40% of σ_v , the density of the pore water is 1,035 SG and the density of the rock formation is set to $1,035/0,4 = 2,5875$ SG. Table 3.1 shows the estimated values thereof^[2].

Formation	Poisson's ratio	P_F percentage of σ_v	Reduction of P_F compared to reduction of P_p (%)
Salt	0,5	100,0	0,0
Shale	0,4	80,0	33,3
Sand stone	0,25	60,0	66,7
Chalk	0,15	50,6	82,4

Table 3.2: Fracture pressure in relations to the overburden, σ_v , and the reduction of fracture pressure in relations to the reduction of pore pressure in different formation types, also called depletion factor in chapter 4.1, underestimated depletion.

The same data is visualized in Fig 3.5.

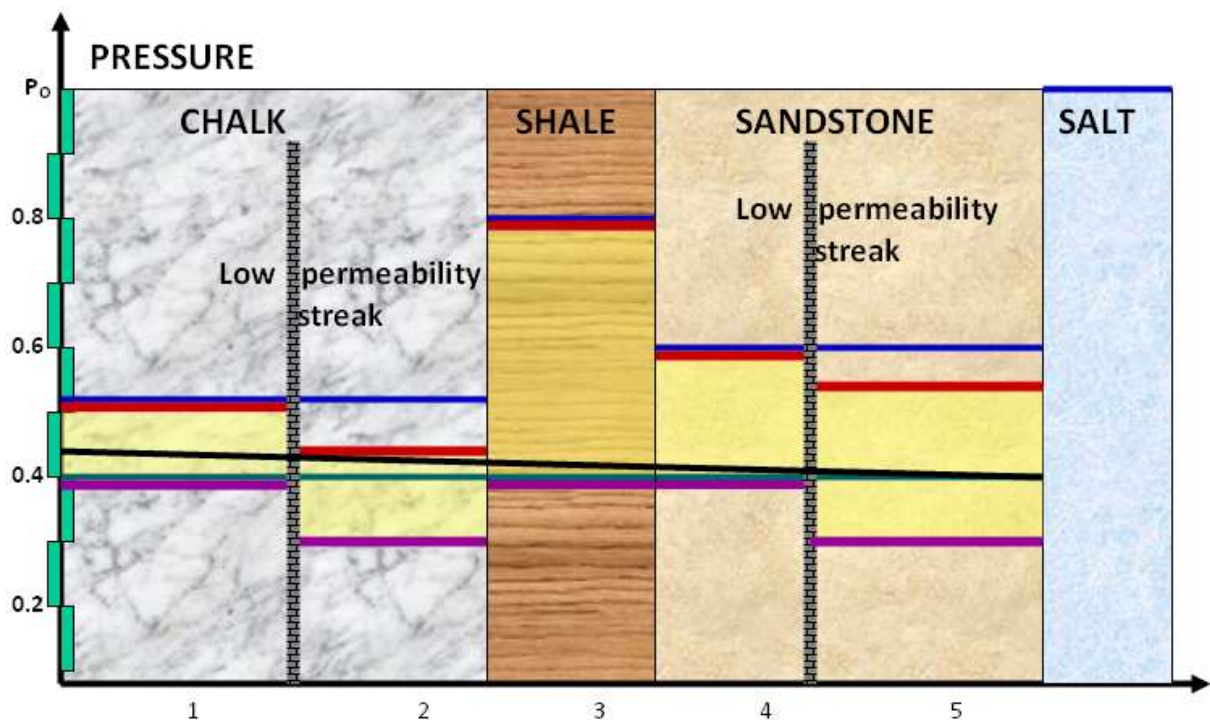


Fig 3.5: P_p and P_f in a reservoir with different rock formations^[2].

The blue and green lines show P_F and P_p respectively, before fluid extraction. Red and purple show the same after there have been fluid extraction in zones two and five. These zones have had a reduction in P_p which leads to a reduction in P_F . The yellow areas shows the limits the well pressure must be held within while drilling a horizontal well. The black line represents a possible scenario of how the pressure in the wellbore would behave, with the drill bit on the left side of this line.

As figure 3.2 shows it would be nearly impossible to drill in this example because of the low P_F in the produced chalk zone and the high P_p in the unproduced zones. In Fig. 3.5 shale is assumed to have the same pore pressure as the reservoir rocks. But shale often has a higher P_p than other formations like sand and chalk, because of its low permeability. If this is taken into account it would be impossible to drill the shale section shown with conventional drilling techniques without setting a casing or liner.

3.5.2 Managed Pressure Drilling

One way of solving the problem with small pressure margins is utilizing Managed Pressure Drilling (MPD) technology. This is a methodology that has been developed and implemented in the past years with great success to mitigate known and unknown drilling hazards^[4]. By creating a closed and pressurized mud returns system it is easier to predict and control the reactions of the formation to the drilling program. The MPD systems can be divided into four categories; HSE MPD, constant bottomhole pressure (CBHP) MPD, pressurized mud cap drilling (PMCD) MPD and dual gradient MPD.

The main application of HSE MPD is to create a closed drilling fluid returns system to minimize the risk of having human contact with hazardous material such as H₂S or CO₂, or if a highly toxic drilling fluid system containing example caustics is used.

CBHP MPD is used in situations where a well is expected to experience kick-loss scenarios when drilling in wells with close tolerance operation windows. The loss is characterized as drilling fluid starting to flow into the formation when the mud pumps are started. This is because the equivalent circulation density of the drilling fluid exceeds the formation strength. If this is combated with a reduction in mud weight the pressure exerted by the hydrostatic column might become insufficient to control the well in static conditions. Formation fluid now starts to flow into the well which is the kick part. Applying a back pressure to the circulating system allows for adjusting the bottomhole pressure (BHP) in the well by reducing the back pressure under dynamic conditions, like when drilling, and increasing it during connections, keeping a stable BHP at all time.

PMCD MPD is when drilling with a sacrificial fluid, i.e. no returns to surface. A light viscous drilling fluid is also pumped down the annulus at a fixed rate with applied backpressure. The drilling fluid pumped into the annulus is to keep the backpressure needed to control the well to a minimum and at the same time prevent the sacrificial fluid to flow upwards. By doing this the sacrificial drilling fluid along with cuttings and possible formation influx is forced back into the weak parts of the formation which could be a drilling hazard.

Wells with a rapidly increasing pressure gradient cannot be drilled with a single drilling fluid density without fracturing the overlying formation. This is the case, especially for deep water wells. For conventional drilling this would be solved by setting a casing or liner and changing the drilling fluid density. However, by use of a dual gradient MPD, this can be done without the use of an intermittent casing. By injecting a lighter fluid into the annulus where the pressure needs to be reduced, through a parasite string or through valves in the casing, a heavier drilling fluid can be used below this point. This gives an increased pressure at the bottom without the danger of fracturing the overlying formation.

3.6 Wellbore pressure

The pressure at the bottom of a well is governed by several different factors. The most influential of these is the density of the drilling fluid used. By multiplying the density of the fluid with the true vertical depth (TVD) of the well and the constant acceleration of gravity, the static pressure of the well is given^[5]:

$$P = \rho gh \quad (15)$$

P = pressure (kPa)

ρ = density (kg/l)

h = depth of well (TVD)

g = constant acceleration of gravity (9,81 m/s²)

With no pumping, rotation of the drill string, or cuttings suspended in the drilling fluid, and assuming that the density of the drilling fluid is constant throughout the wellbore, the above equation gives the correct pressure seen at any depth in the wellbore.

3.6.1 Fluid friction

When the drilling process is started additional effects will contribute to increase the wellbore pressure in the well. As drilling fluid starts to flow through the nozzles of the drill bit and up through the annulus it starts to lose some of its energy, which is absorbed by dissipation in friction forces. These friction forces are either due to internal friction in the drilling fluid because of its viscosity, or external friction against casing and openhole walls^[6].

This pressure loss due to the fluid flow is highly dependent on the rheological properties of the drilling fluid and the velocities attained in the annulus. The pressure drop for a section of annulus with a drillpipe inside can be calculated by the following^[6].

Laminar flow:

$$\Delta P_F = \frac{LQ\mu}{408,63 \cdot (D_o + D_i) \cdot (D_o - D_i)^3} \quad (16)$$

Turbulent flow:

$$\Delta P_F = \frac{L\rho^{0,8}Q^{1,8}\mu^{0,2}}{706,96 \cdot (D_o + D_i)^{1,8} \cdot (D_o - D_i)^3} \quad (17)$$

ΔP_F = pressure drop (kPa)

Q = volume rate (l/min)

D_i = annulus inside diameter (in)

D_o = annulus outside diameter (in)

ρ = drilling fluid density (kg/l)

μ = viscosity (cP)

L = measured depth of the section (m)

These equations give the pressure drop along an annulus with constant cross section. If there is a change in the flow area the pressure drop for each section needs to be calculated separately and then added together along the flow path^[6]. These equations do not take eccentricity into account and it is accordingly assumed that the drillpipe is in the center of the wellbore throughout the whole section.

3.6.2 Cuttings

As formation is drilled, more cuttings need to be transported from the bottom of the wellbore and up through the annulus. The density of the cuttings is in general higher than the density of the drilling fluid, so this will lead to an increase of the average density of the drilling fluid. This new density is called equivalent static density (ESD) and the increase in wellbore pressure due to this effect can be calculated by^[5]:

$$\Delta P_B = \frac{(\rho_B - \rho_m) \frac{\pi}{4} D_B^2 v_B}{(Q + \frac{\pi}{4} D_B^2 v_B)} gh = ESD \cdot gh \quad (18)$$

ΔP_B = pressure drop (kPa)

ρ_B = density of cuttings, included formation fluids (kg/l)

ρ_m = density of drilling fluid (kg/l)

D_B = diameter of wellbore (in)

v_B = rate of penetration (m/s)

Q = volumetric flow from the pump (m³/s)

h = true vertical depth of well

This equation gives the maximum static pressure increase in the annulus, since it assumes that cuttings are evenly distributed in the entire wellbore given a specific rate of penetration (ROP).

In addition to increasing the static wellbore pressure the cuttings can also influence the flow regime of the drilling fluid. Every single piece of formation being transported up the annulus will fall in the direction of gravity because of its higher density. Since all the pieces are moving slower than the carrying fluid they will act as an obstruction to the fluid flow and thus, on a small scale, change the flow pattern of the fluid. It can be argued that this disturbance in fluid flow will result in an additional pressure drop along the annulus.

Another effect that can be attributed to the cuttings is that it changes the rheological properties of the drilling fluid. If a drilling fluid flowing in the transition phase between laminar and turbulent flow is considered, the addition of cuttings in this drilling fluid could increase its viscosity. This could result in the flow regime being pushed towards laminar. If this leads to an increase or a decrease in pressure drop in the annulus is highly dependent on the flow rate in the annulus.

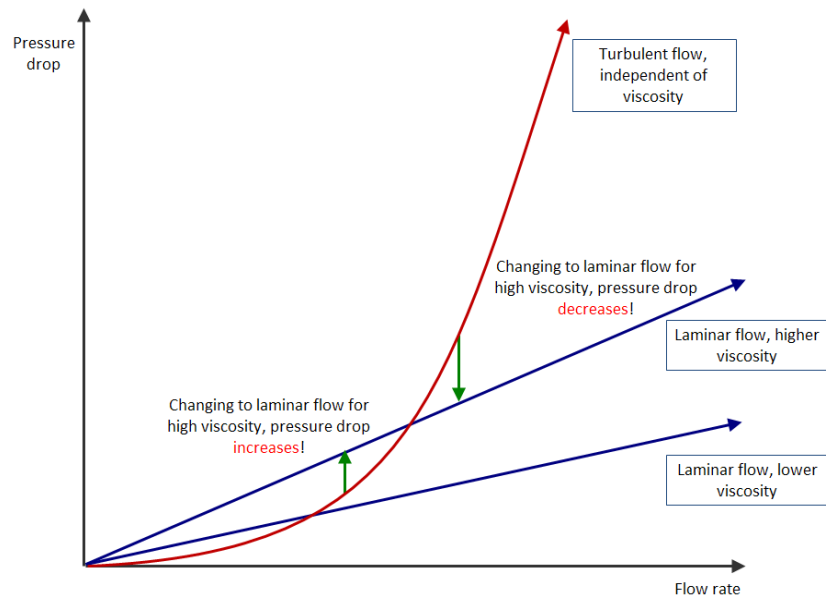


Fig 3.6: A drawing showing how pressure drop in a fluid will behave with an increase in viscosity with regards to flow rate.

The effect of changing from turbulent to laminar flow due to cuttings in the return drilling fluid flow has not been documented and it is unknown if it would have any practical application in drilling.

3.6.3 Drillstring rotation and eccentricity

The eccentricity of the drill string can influence the pressure drop in the annulus in a number of ways. When considering all different annular geometries during a drilling operation, the probability of a completely concentric annulus is very small at any given time^[7]. An increase in eccentricity, while not considering any other pressure influencing effects, will generally lower the pressure loss over the eccentric interval. Although there is no change in the total flow area of the annulus as the eccentricity increases, there will be an increase in the flow area where the friction effect from the borehole wall and the outside of the drill string is reduced. This allows the drilling fluid flow to become more stable.

Drill string rotation, like eccentricity, can influence the pressure drop in the annulus in a number of ways. A drill string rotating in a concentric annulus with a fully developed laminar flow does not influence the axial pressure drop for the section. This is because in laminar flow the direction of the force in the flow is in one direction. By drawing the direction of the flow as vectors it is more easily illustrated;

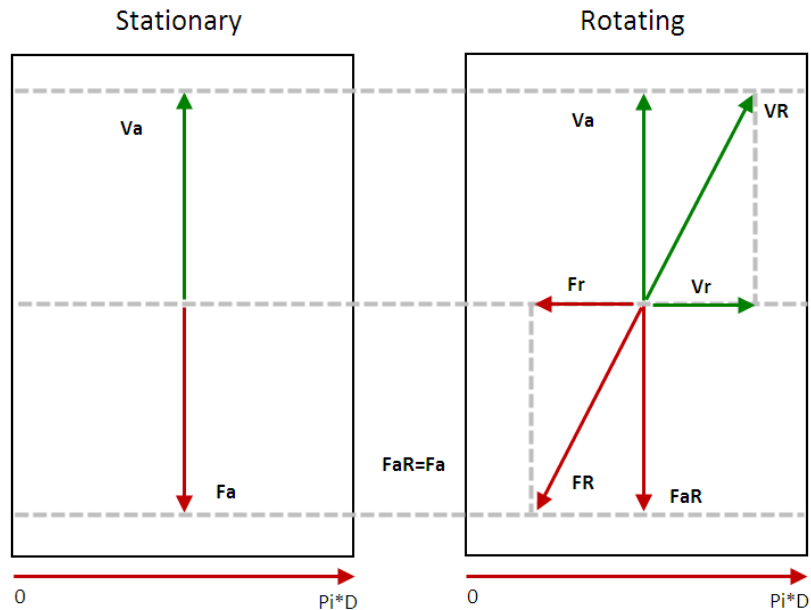


Fig 3.7: Figure showing the flow directions in a Newtonian flow with a non rotating drillpipe and a rotating one.

Figure 3.7 shows a drillpipe being unfolded to represent a sheet of metal. In the stationary case, the flow direction (green arrow) will be straight up in axial direction. In the rotating case the direction of the resultant flow (green arrow) will be shifted towards the direction of the rotation. Since we can decompose the velocity as shown (green arrows), and friction forces are proportional to the velocities for laminar flow, we see that the force in axial direction is equal for the two cases $F_{aR} = F_a$. The tangential, F_r , force only contributes to an increase in torque on the drillpipe.

When eccentricity is applied the situation changes. Eccentricity alone will reduce the pressure loss over a section, but when the drill string is rotating, the pressure loss over the same section may increase if the rate of rotation is sufficiently large. This is due to inertial forces caused by the rotation and eccentricity of the inner cylinder^[8]. The magnitude of the increase in pressure loss is a function of three dimensionless numbers, the Taylor number, the eccentricity and a dimensionless gap width.

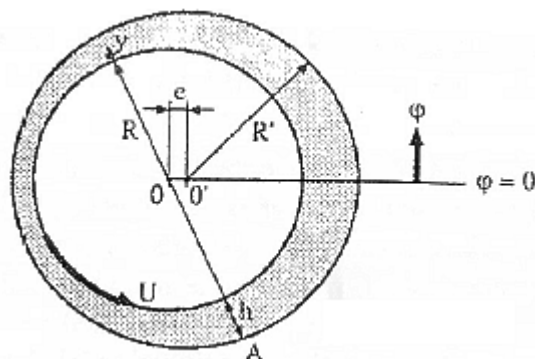


Fig 3.8: Annular space between inner- and outer cylinder, the displacement of the two circles centres is shown with the letter e ^[8].

The eccentricity (ϵ) is defined as the centre of the inner tube's deviation from concentric placement divided by the difference of the two tubes radii, see Fig 3.8.

$$\epsilon = \frac{e}{R' - R} \quad (19)$$

ϵ = eccentricity

e = displacement of the inner cylinder

R' = radius of the outer cylinder

R = radius of the inner cylinder

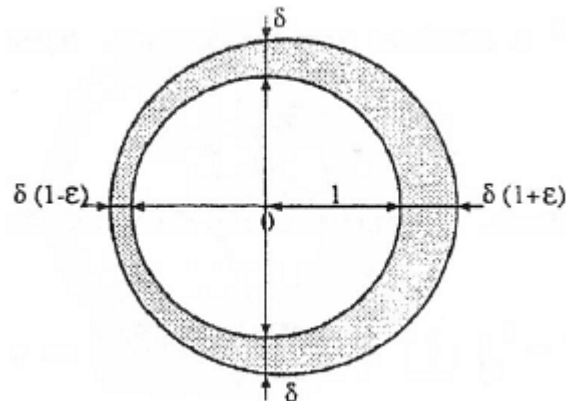


Fig 3.9: Dimensions of annular space^[8].

The dimensionless gap width (δ) is the distance from the inner tube to the outer tube, divided by the radius of the inner tube as shown in Fig. 3.9.

$$\delta = \frac{d}{R} \quad (20)$$

δ = dimensionless gap width

d = distance from the inner to the outer cylinder ($R' - R$)

The Taylor number characterizes the importance of inertial forces due to rotation of a fluid about a vertical axis relative to viscous forces. There are various definitions of the Taylor number, which are not all equivalent, but the one used by G. Ooms and B. E. Kampman-Reinhartz is^[8]:

$$Ta = \frac{\rho \omega R d}{\mu} \quad (21)$$

Ta = taylor number

ρ = drilling fluid density (kg/m^3)

ω = rotational frequency of the inner cylinder (1/s)

The conditions investigated by G. Ooms and B. E. Kampman-Reinhartz^[8, 9] only included laminar flow of a Newtonian fluid. The pressure increasing effects are of course not limited to these conditions, but for a turbulent regime and non-Newtonian fluids the flow phenomena will become more complicated due to turbulence effects, shear rate and viscosity variability.

As drilling commences, down hole conditions will change over time. The ROP might change, the flow rate can change and drill string rotation is seldom constant. In addition the cuttings will not behave the way we want them too. Ideally the cuttings should get transported directly out of the annulus along with the drilling fluid, but this is not the case. Depending on the inclination of the well the cuttings will form cutting beds, which will change depending on several parameters. This calls for a method of predicting downhole conditions in a time based model. S.S Costa et al^[10] presented such a method that is capable of evaluating bed height, cuttings concentration, pressure and ECD variations over the whole trajectory of the well. By using mass and momentum conservation equations they were able to produce plots giving a realistic description of the transient cuttings transportation in the wellbore. The work was considered a first step in the development of a general tool to analyze complex situations, which prediction of pressure and ECD in drilling conditions are.

3.6.4 Tool joints

Tool joints influence the pressure drop in the same manner as a change in wellbore diameter does by changing the flow area. One way to calculate the effect of tool joints is to sum up the total length of the joints and calculate the pressure drop over this “tool joint section” by using Eq. (17). It is also important to subtract the length of all the tool joints from the rest of the sections when calculating the rest of the pressure drop. If this method is used for pressure drop calculation an important factor is not addressed properly. The Geometries of the tool joints will have an effect on the flow of drilling fluid around them. Sharp angles and edges will cause the fluid to undergo sudden contractions and expansions^[11]. This results in a significant loss of mechanic energy, compared to tapered tool joints, where the contraction and expansion occurs more gradually.

When the fluid passes over the connections there is an increase in fluid velocity because of the reduction in flow area. When the fluid has passed the connection the velocity is reduced again. In a turbulent fluid flow, especially, the energy lost from the reduction in velocity is used to make more vortices in the flow. This again shows that a section of connections added up to represent one long stretch of pipe with a reduced flow area, will oversimplify the calculation and give a lower pressure drop than what is observed.

3.6.5 Lateral drillstring movement

Lateral movement of the drill string in the wellbore is also a parameter that can affect the pressure drop. A description of this lateral movement could be a drill string moving from one side of the wellbore to the other and back again. As the drill string moves, drilling fluid in front of the string is being displaced and fills the vacated area behind it. With the right annular dimensions this lateral fluid velocity can be as high as five times the fluid velocity up the annulus. Therefore the fluid can be in turbulent flow well below what is calculated as the critical velocity of a stationary concentric annulus^[7].

4. Case history - A loss of circulation incident in the North Sea

In 2006 a well in the North Sea experienced a major loss of circulation when drilling through a depleted reservoir. The losses started shortly after drilling through a hard stringer and were not cured until cement was squeezed into the loss zone. Investigation of the incident did not reveal the true cause of the loss situation, but several interesting and plausible explanations emerged.

4.1 Underestimated depletion

During the planning of the well the depletion of the reservoir being drilled through was estimated to be around 80 bars. When calculating the reduction in the fracture pressure due to this depletion a depletion factor is used. The depletion factor shows how much a reduction in pore pressure will affect the fracture pressure. If the depletion factor is 0,50 it means that a depletion in the pore pressure of 100 bar will give a reduction in fracture pressure of 50 bar.

The first estimated depletion of 80 bars corresponds to a fracture pressure equal to 2,05 SG. Back calculation after the loss, by using the mud weight in the system when the loss was cured, showed a fracture pressure equal to 1,975 SG, corresponding to a depletion of as much 160 bars. The calculation is done with a depletion factor of 0,67^[12]. Using this value shows that a depletion of 160 bars will give a reduction in the fracture pressure of about 107 bars.

It was also pointed out that this depletion calculation has errors, like uncertainties about the mud weight and how the stress situation is in the formation and that the loss was due to the depletion of the formation, so the answer could be even more, or less. Below in figure 4.1 is a pressure curve plot made after the loss situation. It shows the pore pressure (black line), mud weight (light green), ECD (green) and the fracture gradient (purple). Looking at this could give the impression that underestimated depletion of the formation being drilled is the main cause for the lost circulation. But having in mind the errors around the calculations, it does not give a complete picture of the event.

A well in the North Sea

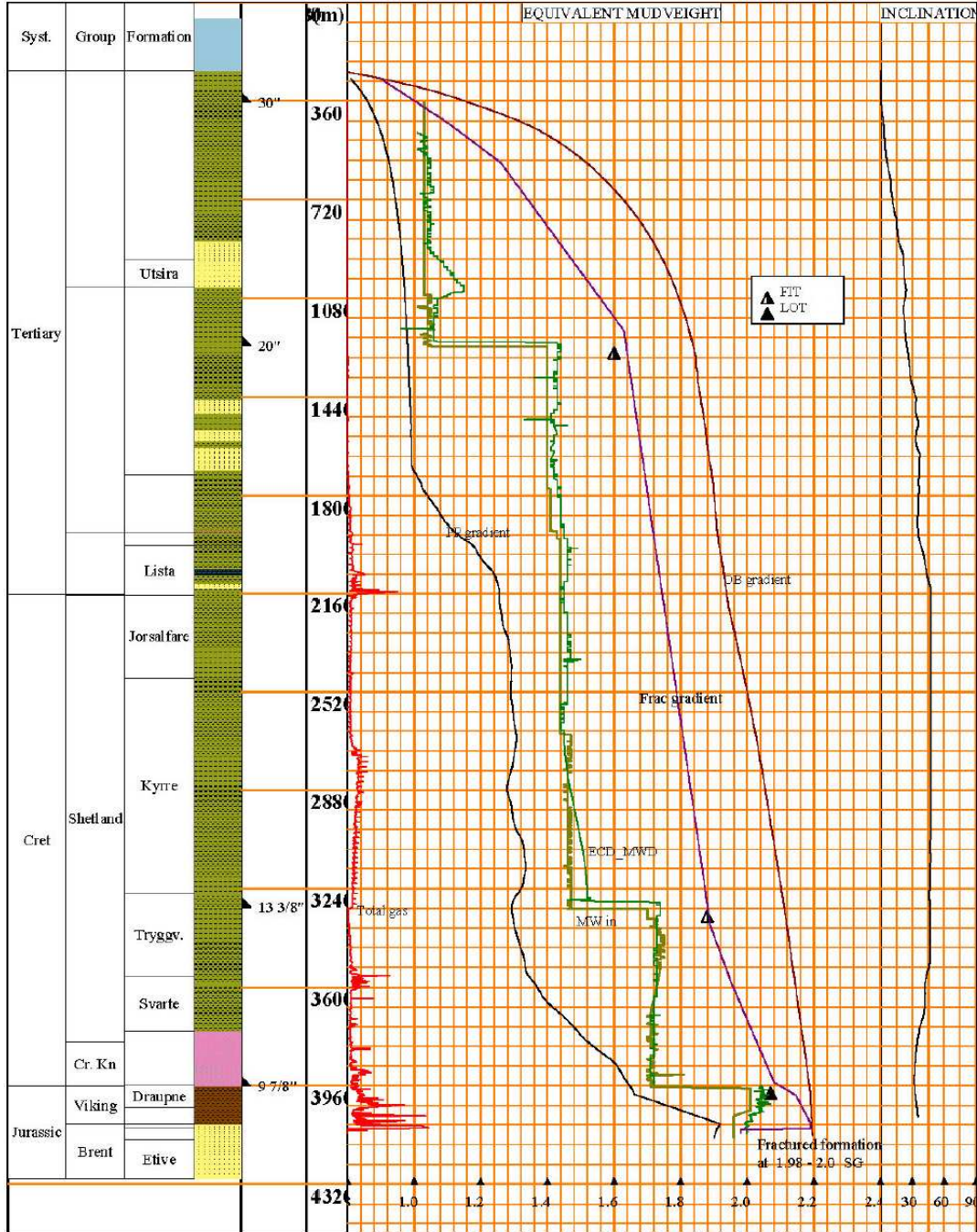


Fig 4.1: Pressure curve plot showing PP, frac, MW and casing setting points. The values for the frac curve are obtained from data collected after the loss occurred and is not the same curve as was on the pressure curve plot made in the planning phase.

4.2 Shear tension in the formation

As mentioned in chapter 3.4, Drilling in depleted zones, the depletion of a formation is seldom uniform. Often one part of the formation has a lower permeability and therefore has had less formation fluid produced from it, leading to a higher pressure than, say, the more permeable formation below. This difference in pressure in the two formations leads to shear forces between them. The interface between the two formations now has tensions differing from the normal σ_x , σ_y and σ_z described in chapter 3.1, Rock mechanics. These insitu forces make the formation less resistant to outside influence, say, from the drill string and annulus pressure.

When the drill bit now penetrates the hard stringer and goes into the softer formation below, it is also drilling into an area with forces working in other directions than what they were above. These areas, often below hard stringers or between formations with different pressure regimes, is where drilling problems, like loss of circulation, occur more frequent than when drilling in a formation where the distribution of forces is more homogeneous.

4.3 Pack off

In the following more specific details about the well in the North Sea will be considered. The bottomhole assembly (BHA) used in the last section of the well is shown in Fig. 4.2.

While drilling the last part of the 8 1/2" section the reported ROP was 20 meters per hour. About a meter before the loss occurred the ROP dropped to 1-2. The pressure while drilling (PWD) measurement device was located 5,2 meters above the bit, which is between the GVR and EcoScope components in figure 4.2, and the memory dump from this device showed no indication of an unnatural pressure buildup, which means that a pack off must have happened below the PWD. Since this is a short interval and very close to the bit there would be no buildup of a cuttings bed, meaning all the cuttings causing the pack off would have to come directly from newly drilled formation. The most likely area for a pack off would be around the GVR, a tool delivered by Schlumberger used to do logging while drilling (LWD). The outside of the tool has a layout similar to a stab making a potential area for cuttings to accumulate around.

When drilling through the hard section of formation there is a good possibility the hole would be in gauge with the bit, with no sort of washouts or hole abnormalities present. This would lead to a further minimization of the flow area available around the GVR when it goes through the stringer and the bit is drilling into the softer formation below.

When the drill bit got through the hard stringer it is reported an instantaneous increase in the ROP. How big this increase was at the moment right after penetration is hard to say, mostly because the

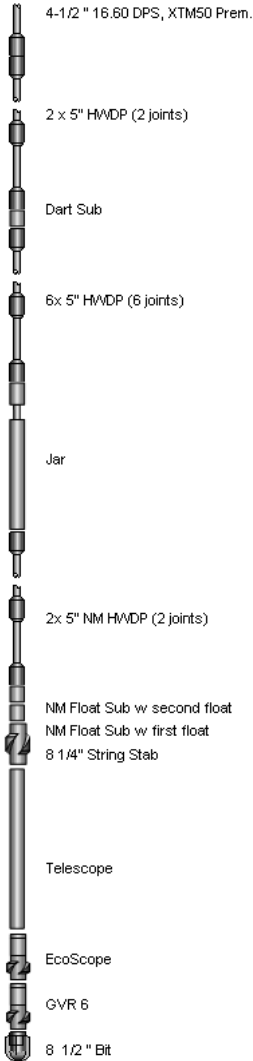


Fig 4.2: BHA drawing.

ROP measurement is averaged over time, but also because a correlation between ROP and WOB is hard to get from the recorded data. This is because such a relation is also dependent on parameters like drill string rotation rate and formation strength and type being known for the interval in question. A good estimate of the ROP just after penetration of the stringer could give an indication to the chances for a pack off due to increase in cuttings and therefore volumetric flow around the GVR.

One way of telling if there was a pack off around the GVR would be to monitor the stand pipe pressure. A peak in a pressure versus time plot would indicate such an incident taking place. The timescale needed to see this peak would be at, or around, the one second interval. The available data for the well was at a 10 second scale and did not show any pressure peak. In addition to having a too long time interval for the measurements, the well itself was 5172 meters MD when the loss occurred. There is a big possibility that the increase of the standpipe pressure never would be recorded at the surface because of this long distance and dampening effects in the drilling fluid system.

4.4 Stringer penetration

The shape of the drill bit can have an influence on how the hard stringer is being drilled through. A bit with a round shape, like a sphere, would penetrate the hard section in the middle before the edges has drilled through. A bit with more profile on the edges could have the same effect on where the stringer is penetrated first, depending on the inclination of the well path and the angle of the bedding plain.

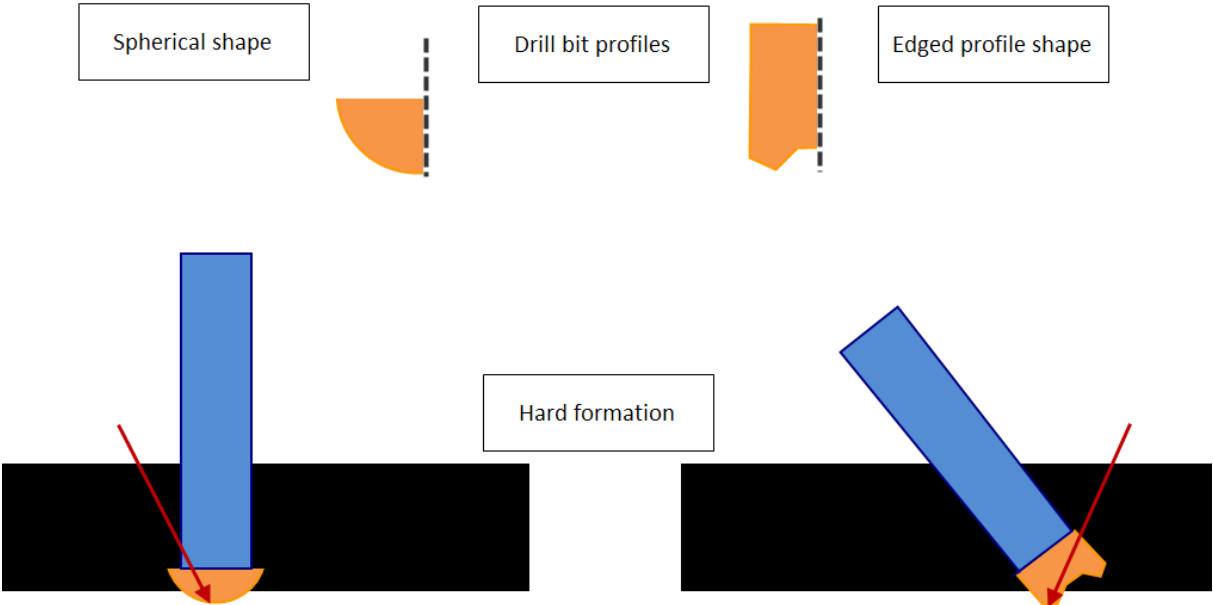


Fig 4.3: Illustration of how different drill bit profiles would penetrate a formation. The red arrows point to where the drill bit will first punch through.

Figure 4.3 is a concept drawing of two different drill bit profiles and how they would cut through a section of hard formation. The inclination of the well and the angle of the hard formation is arbitrary as similar illustrations can be obtained by changing the two. As one part of the drill bit will penetrate the hard formation and reach the softer below, the rest of

the drill bit will continue to cut the stringer for some time, making it look like the whole drilling assembly is hanging on an edge. Figure 4.4 below shows the low ROP, the green circle and arrow, while drilling the stringer, and the increase seen after getting completely through.

Having one part of the drill bit in contact with the softer formation below while the rest of the stringer is being drilled can cause drilling fluid to be jetted into this zone. Depending on how large the jet velocity is this could penetrate deep down, breaking up the formation and cause a washout. This is only possible because the ROP while drilling the rest of the stringer still is significantly lower than it would be drilling in softer sandstone. When the whole drill bit is through the hard formation the broken up, softer formation would be drilled faster and in larger pieces than expected. This could then easier lead to a pack off around the GVR tool.

If this jetting of drilling fluid into the formation below the stringer were to happen, it is reasonable to assume that the drilling fluid would be lost in the soft formation. A look at the drilling logs from the well shows, however that the drilling fluid return stay stable until the major loss itself happens, indicating that jetting into the formation below while breaking through the stringer did not contribute anything to the cause of the loss. See Fig. 4.4, red circle.

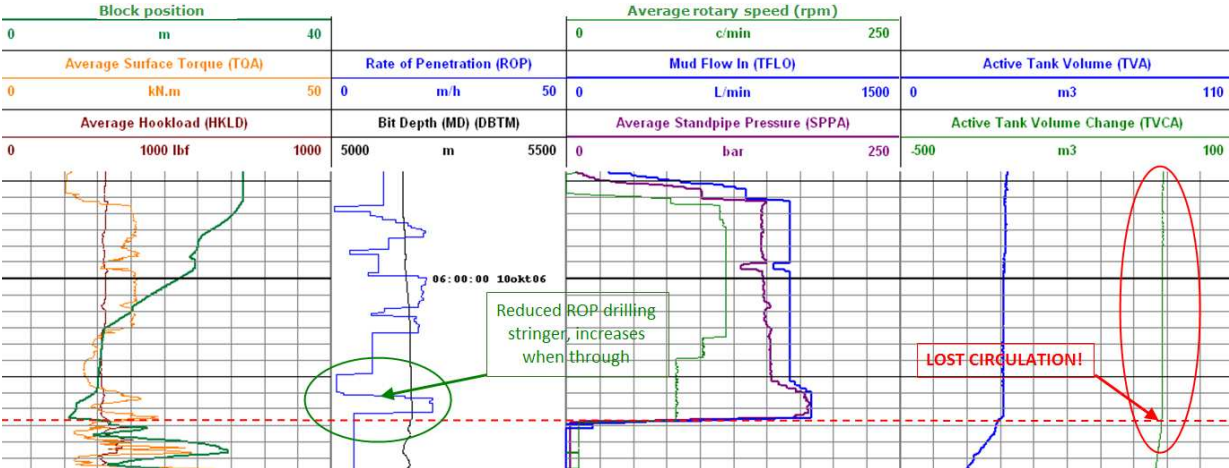


Fig 4.4: A snapshot from the well log at the interval where the major loss occurs. No loss on the Active Tank Volume Change (red circle to the right) is shown beforehand of the incident.

4.5 Drilling fluid properties

The drilling fluid used while drilling the 8 ½” section of the well was cesium format brine, a drilling fluid used very seldom around the world. It was used for the first time world wide at the Huldra field in the North Sea by Statoil ASA^[13]. It does not contain any particles, not counting lost circulation material (LCM) additives, since the weighting material is salt ions, and it does not contain any base oil. This means it is not a good drilling fluid with respect to creating a good mud filter cake in the wellbore. While drilling a good mud filter cake helps prevent seepage losses of drilling fluid by plugging small cracks in the wellbore wall and by plugging cracks it also helps preventing propagation of said cracks. This effect can prove to be valuable when drilling into an already weak formation, or a potential loss zone, serving as a preliminary strengthening agent.

The StatoilHydro guidelines for avoiding losses recommend to keep the fluid loss, which is an indication of how much of the drilling fluid that escapes through the mud filter cake and into the formation, lower than 2-3 ml / 30 min^[14], and when drilling in high temperature high pressure (HPHT) conditions below 1-2 ml / 30 min^[15]. This was not done while drilling the well in question. During previous sections of the well the fluid loss was, in fact, recorded to be up to eight times higher than recommended.

Baroid Fluid Services

Fluid Property Recap : Water-Based Fluid

Date	Depth m	FL Temp Deg C	Density SG	Funn Visc sec/l	Rheology 50 Deg C					Filtration				
					PV mPa.s	Pa				API ml/30 min	HTHP ml/30 min	Cake API mm	Cake HTHP mm	Temp Deg C
						YP	10S	10M	30M					
07/10/2006	5,071	50	2,000		21	3.8	1.9	3.3	4.3	1.5	8.0	1	1	150
07/10/2006	5,081	51	2,000		22	3.4	1.4	3.8	5.2	1.5	8.4	1	1	150
07/10/2006	5,089	51	2,000		21	3.8	1.4	3.8	5.2	1.4	8.2	1	1	150
07/10/2006	5,095	51	1,980		21	3.8	2.4	4.3	4.8	1.2	10.8	1	1	150
08/10/2006	5,099	49	1,980		21	3.8	2.4	4.8	5.7	1.1	7.2	1	1	150
08/10/2006	5,109	50	1,980		23	2.9	1.4	4.3	5.2	1.2	5.8	1	1	150
08/10/2006	5,112	52	1,980		22	3.4	1.4	4.3	5.2	1.4	6.4	1	1	150
08/10/2006	5,117	52	1,980		22	3.4	1.4	4.8	5.7	1.2	6.4	1	1	150
09/10/2006	5,122	49	1,980		21	4.8	3.3	4.8	6.2	1.0	6.8	1	1	150
09/10/2006	5,129	52	1,980		22	3.8	1.4	4.3	5.2	1.4	6.6	1	1	150
09/10/2006	5,133	52	1,960		21	3.4	1.4	4.3	5.2	1.7	5.8	1	1	150
09/10/2006	5,137	52	1,960		21	3.8	1.9	4.8	4.8	1.6	6.2	1	1	150
10/10/2006	5,151	52	1,960		20	3.4	1.9	4.8	4.8	1.1	8.6	1	1	150
11/10/2006	5,172		1,820		16	1.9	0.5	1.0	1.0	2.6	10.4	1	1	150
13/10/2006	5,151		1,820		16	1.9	0.5	1.0	1.0	2.5	10.4	1	1	150
14/10/2006	5,151		1,817		16	1.9	1.0	2.0	2.0	2.6	10.4	1	1	150
15/10/2006	5,151		1,820		16	1.9	0.5	1.0	1.0	2.6	10.4	1	1	150
16/10/2006	5,151		1,860		16	1.9	0.5	1.0	1.0	2.6	10.4	1	1	150
17/10/2006	3,004		1,845		16	1.9	1.0	2.0	2.0	2.6	10.4	1	1	150
18/10/2006	5,151		1,845		16	1.9	1.0	2.0	2.0	2.6	10.4	1	1	150

Fig 4.5: Copy from a well report showing the fluid loss the last 100 meters of the 8 1/2" section before the loss occurred (red area)^[16].

As figure 4.5 shows, the fluid loss for the last 100 meters vary between 5,8 and 10,8 ml / 30 min. This means that the starting point for avoiding or controlling loss situations, with regards to the drilling fluid, is not as good as it could have been.

The cesium format brine used as drilling fluid had 40 kg of calcium carbonate solids per cubic metre fluid, it was this mix that gave the before mentioned fluid loss of up to eight times as high as the recommendation. To redeem this, another 100 kg of calcium carbonate and graphite was added per cubic metre, which brought the fluid loss down to what is shown in figure 4.5. The reason why no more solids were added was because the operators wanted brine to flow into the formation. This influx could then be measured by the resistivity logging tool, which in turn could be used to calculate the permeability of the formation being drilled. The adding of solids was therefore a compromise between wanting to measure the permeability and wanting to prevent loss of drilling fluids, and not an action taken solely to prevent loss of circulation.

The main reason for choosing this unconventional drilling fluid system, which can be compared more to a completion fluid than a standard drilling fluid, was because of its stability. It is very resistant against sag, which is settling of particles, since there are almost

no particles in it, and it is a very stable system in a HPHT environment. In addition it yields a lower ECD than oil based drilling fluids with similar densities do, and the dissolution of gas is minimal^[13].

Particles in a drilling fluid, as mentioned before, help to close up pores and cracks in the formation. Depending on what kind of holes need clogging, different sizes of particles are needed. As long as only the pore channels need to be clogged, small particle sizes are sufficient. But if larger cracks, natural or drilling induced, are present, larger particles need to be a part of the drilling fluid to more effectively plug the cracks.

While drilling the well there were used screens with 200 and 210 mesh during the entire 8 ½" section. This is a fine mesh, filtering out the bigger particles in the already particle deprived drilling fluid. To compensate for this, solids were added continuously during drilling to try to maintain the wanted 140 kg / m³ solids concentration. What this basically means is that the amount of large particles is kept constant, while the amount of smaller particles increase since these pass through the mesh used on the shakers, and continue to circulate in the system. Over time this will affect the d90 distribution of the particles. The d90 distribution is a measurement showing what particle size which 90 percent of the particles in the drilling fluid are smaller than. The more small particles are present compared to large particles, the lower the d90 particle size becomes.

During drilling the drill string will also act as a grinder on the particles in the drilling fluid. Large particles will be crushed into smaller pieces on their way up the annulus because of the mechanical movements of the drill string. This is another factor leading to the increase of small particles in the drilling fluid. The lower the minimum particle size is in the d90 distribution, the smaller the chance larger particles will move into cracks in the formation and aid in building a seal around them.

5. Discussion

The loss of circulation incident could be a result of having underestimated the depletion of the formation being drilled through, shear tensions in the formation due to heterogeneity in the depletion, or a pack off. The reason discussed in chapter 4.1.4, “Stringer penetration”, is not a likely reason since there was not observed any drop in the drilling fluid returns prior to the loss incident, which happened after the stringer was drilled through.

If the reason for the loss was a pack off it would, as mentioned, have happened very fast and just above the drill bit. This means there would have been very little time for the drill fluid to chemically interact with the cuttings. In other words, if this were to be prevented something would have to be done with the drilling parameters, adjusting them accordingly to the situation. Since StatoilHydro already have well tested guidelines for stringer drilling^[14], and these were followed during the drilling operation, it is unlikely further optimization would have a big impact on the success of drilling the stringer unless they were very drastic, which could impede the efficiency of the operation.

The reason presented in chapter 4.1.5, Drilling fluid properties, is not a direct reason for the loss occurring. It is more reasonable to categorize this as a reason for allowing the loss to occur. The drilling fluid used is a very good fluid for drilling in a well known formation where the problems can be anticipated or are known beforehand. When drilling into a depleted formation, which was done in this case, where the depletion could be more serious than was anticipated, the fluid is not optimal for handling a situation it is not designed for. Even though loss of circulation material (LCM) can be pumped into the well to try and cure a loss, it should be evident that taking measures to minimize the risk for a loss happening is more profitable than taking steps to redeem the situation afterwards.

Total E&P reports of drilling in a HPHT environment on Elgin/Franklin with a pressure overbalance of 600 bars above the pore pressure and 100 bars over the estimated fracture pressure^[15]. The well they drilled was drilled with a conventional oil based drilling fluid, with added solids specified to handle the conditions being drilled into. Similar cases can also be found within StatoilHydro, Statfjord A reports drilling into a depleted formation with an ECD overbalance of 44 bars as compared to the estimated fracture pressure; and Kristin reports a successful drill run with an ECD overbalance of 80 bars.

These findings indicate that, either the estimated fracture pressures are not as accurate as they are believed to be, or the drilling fluid used has certain properties that enhance the wellbores resistance to loss of circulation incidents.

British Petroleum (BP) have a theory about wellbore strength they call “Stress Caging”. The idea is that fractures are formed in the well and LCM material goes into these fractures and plugs them. This causes the stresses around the borehole wall to keep it from fracturing at other places. One way of illustrating this would be to drive a wedge shaped perfectly to fit a crack into it. The wedge would prevent anything going into the crack, and the force exerted from the wedge on the surrounding wall would increase the walls resistance to cracks forming other places. Although this theory explains why an ECD well above the fracture pressure is observed, it could just as well be a good drilling fluid filter cake preventing the

cracks to form. By blocking small cracks and pore openings the drilling fluid is prevented from flowing into these and causing the formation to fracture any further.

The d90 distribution of particles needs to be held at a level where the probability of the larger particles getting into cracks and plugging them is high enough to minimize the risk of a loss of circulation incident, at least when conventional drilling techniques are being used.

A cost calculation done on the last 8 ½” section drilled at the field in the North Sea before the loss of circulation was done in order to compare the cost of using cesium format drilling fluid with the cost of using oil based warp fluid or a standard oil based fluid. The calculation was done on a section length of 489m and with a 78m³ usage of drilling fluid for all three alternatives. The results are presented in table 5.1.

Drilling fluid	Cesium Format	Warp OBM	Standard OBM
Cost per meter	49 000 NOK/m	19 700 NOK/m	4395 NOK/m

Table 5.1: The estimated cost per metre of a well drilled with different drilling fluid systems.

The calculation was based on the assumption that the 78m³ usage of drilling fluid would be the same, regardless of what drilling fluid system was being used. From the numbers it can be seen that the cost of the cesium format drilling fluid is almost 2,5 times higher than the warp and over 10 times more than the standard OBM. This calculation does not take into account the different properties of the drilling fluids, but it puts into perspective how much more the specific benefits of the cesium format fluid cost than the other two drilling fluids.

6. Conclusion

During drilling of new wells problems can occur that were not anticipated from the start, or the source of the problem can be very hard to pinpoint because of uncertainty or lack of measurements.

In the case discussed here in this thesis the problem that happened was loss of circulation. Even though the cause of this incident cannot be determined with absolute certainty, a lot of the data collected point toward an underestimation of the depletion in the formation, which causes stresses that cannot be directly controlled when drilling conventionally. Even though the drilling fluid used is a good drilling fluid for HTHP conditions, it is not flexible enough to cover conditions it is not specifically designed for.

Based on the case presented in this thesis, it is recommended not using this type of drilling fluid system as a standalone solution in conventional drilling. Utilizing another drilling fluid with more particles in addition to follow guideline procedures set from other experiences, would help minimize the chances for this type of drilling hazard to happen again. If one wishes to use the cesium format drilling fluid because of the properties it has that more conventional systems lack, steps have to be taken so that the benefits of a conventional drilling fluid also applies to the cesium format system. This can be achieved either by adding enough solids to the fluid so that a good drilling fluid filter cake will be made down hole, or by utilizing MPD technologies, which take away the need for such a drilling fluid filter cake.

7. References

1. Fjær, E., et al., *Petroleum Related Rock Mechanics*. Vol. 2nd. 2008, Amsterdam: Elsevier.
2. Skaugen, E., *Boring med liner i lavtrykksreservoar*. 2009.
3. Harrison, H.G. *EQUIVALENT CIRCULATION DENSITY* 2007 07.01.2007 [cited 2009 24.03.2009]; Available from: <http://www.peteng.com/jmm/ecd01.html>.
4. Grayson, B., *Increased Operational Safety and Efficiency With Managed Pressure Drilling*. 2009.
5. Skaugen, E., *Kompendium 1 Boring*. 1997, Stavanger: HiS.
6. Gabolde, G. and J. Nguyen, *Drilling Data Handbook*. 8th ed. 2006, Paris: Editions TECHNIP.
7. Marken, C.D., X. He, and A. Saasen, *The Influence of Drilling Conditions on Annular Pressure Losses*. SPE, 1992.
8. Ooms, G. and B.E. Kampman-Reinhartz, *Influence of drillpipe rotation and eccentricity on pressure drop over borehole during drilling*. European Journal of Mechanics, B/Fluids, 1996. **15**(5): p. 695-711.
9. Ooms, G. and B.E. Kampman-Reinhartz, *Influence of Drillpipe Rotation and Eccentricity on Pressure Drop Over Borehole With Newtonian Liquid During Drilling*. SPE, 2000. **15**(4): p. 249-253.
10. Costa, S.S., et al., *Simulation of Transient Cuttings Transportation and ECD in Wellbore Drilling*. SPE, 2008.
11. Simones, S., et al., *The Effect of Tool Joints on ECD While Drilling*. SPE, 2007.
12. Undertun, O., *Written communication*. 2009.
13. Saasen, A., et al., *Drilling HT/HP Wells Using a Cesium Formate Based Drilling Fluid*. SPE, 2002: p. 6.
14. StatoilHydro, *Quick Reference Guide Best Practice Drilling Operations*. 2008. 47.
15. Singelstad, A.V. and T.H. Omland, *Verbal and written communication*. 2009.
16. *Baroid Fluid Services - End of well report*. 2006.