

ORIGINAL ARTICLE

Further insight into the genetic diversity of *Entamoeba coli* and *Entamoeba hartmanni*

Christen Rune Stensvold¹  | Kasandra Ascuña-Durand² | Amal Chihi³ | Salem Belkessa⁴ | Özgür Kurt⁵ | Ayman El-Badry⁶  | Mark van der Giezen⁷ | C. Graham Clark⁸ 

¹Department of Bacteria, Parasites and Fungi, Statens Serum Institut, Copenhagen S, Denmark

²Laboratorio de Microbiología Molecular, Facultad de Medicina, Universidad Nacional de San Agustín, Arequipa, Peru

³Laboratoire de Recherche Parasitologie Médicale, Biotechnologies et Biomolécules, LR 16-IPT-06, Institut Pasteur de Tunis, Université Tunis El-Manar, Tunis, Tunisia

⁴Department of Biology, Faculty of Nature and Life Sciences, Ziane Achour University of Djelfa, Djelfa, Algeria

⁵Department of Medical Microbiology, School of Medicine, Acibadem Mehmet Ali Aydınlar University, Istanbul, Turkey

⁶Department of Microbiology, College of Medicine, Imam Abdulrahman Bin Faisal University, Dammam, Saudi Arabia

⁷Department of Chemistry, Bioscience and Environmental Engineering, University of Stavanger, Stavanger, Norway

⁸Department of Infection Biology, Faculty of Infectious and Tropical Diseases, London School of Hygiene and Tropical Medicine, London, UK

Correspondence

Christen Rune Stensvold, Department of Bacteria, Parasites and Fungi, Statens Serum Institut, Artillerivej 5, DK-2300 Copenhagen S, Denmark.
Email: run@ssi.dk

Abstract

Despite the species' wide distribution, studies of the genetic diversity within *Entamoeba coli* and *Entamoeba hartmanni* remain limited. In the present study, we provide further insight into the genetic diversity of both species based on analysis of partial nuclear small subunit ribosomal DNA sequences generated from human fecal DNAs from samples collected in Africa, South America, and Europe. Reinforcing the previous recognition that *E. coli* is a species complex, our data confirm the existence of the two subtypes, ST1 and ST2, previously identified plus, potentially, a new subtype, ST3. While ST1 appears to be genetically quite homogenous, ST2 shows a substantial degree of intrasubtype diversity. ST2 was more common in samples collected outside Europe, whereas ST1 showed no geographical restriction. The potentially novel subtype is represented to date exclusively by sequences from South American and African samples. In contrast to previous reports, our new data also indicate substantial variation in *E. hartmanni* that could also support the establishment of subtypes within this species. Here, however, no links were identified between subtype and geographical origin.

KEYWORDS

co-evolution, DNA-based taxonomy, endobionts, evolution, host specificity, protists, ribosomal DNA, taxonomy

ENTAMOEBEA coli and *Entamoeba hartmanni* are both considered non-pathogenic endobionts of the gastrointestinal tract. The life cycles of both species involve trophozoite and cyst stages, both of which may be observed in fecal samples. Despite their high prevalence and cosmopolitan distribution, studies of the genetic

diversity and host specificity of these two species remain limited.

Mature *E. coli* cysts, which can attain sizes of up to 30–35 µm, typically contain eight nuclei, a classic morphological hallmark that has been used to identify *E. coli* in fecal concentrates and differentiate it from other

This is an open access article under the terms of the [Creative Commons Attribution-NonCommercial](https://creativecommons.org/licenses/by-nc/4.0/) License, which permits use, distribution and reproduction in any medium, provided the original work is properly cited and is not used for commercial purposes.

© 2022 The Authors. *Journal of Eukaryotic Microbiology* published by Wiley Periodicals LLC on behalf of International Society of Protistologists.

species of *Entamoeba* found in humans. *E. coli* appears to be an endobiont mainly of primates, but possibly also colonizes other mammals. Based on morphology, *E. coli* has also been reported from, among others, pigs (Pinilla et al., 2021) and dogs (Campos Filho et al., 2008). In addition to *E. coli*, octonucleate cyst-producing species of *Entamoeba* for which DNA sequences are available include *Entamoeba muris* (Kobayashi et al., 2009) and *Entamoeba* sp. RL7 (Jacob et al., 2016).

Entamoeba hartmanni is also an endobiont of both humans and non-human primates, and this species has been identified recently in pigs via metabarcoding of fecal samples (Stensvold, Jirku-Pomajbikova, et al., 2021). Mature cysts contain four nuclei, but, with a maximum size of 10 μm , cysts of *E. hartmanni* are typically distinctly smaller than those of other species that produce quadrinucleated cysts, such as *Entamoeba histolytica* and *Entamoeba dispar*.

In 2011, extensive cryptic sequence diversity in the small subunit ribosomal RNA (*SSU rRNA*) genes was identified within *E. coli*, leading to the recognition of two distinct subtypes (ST), ST1 and ST2, and indicating that *E. coli* is a species complex (Stensvold et al., 2011). This situation is similar to that found in *Entamoeba gingivalis* (Cembranelli et al., 2013; Garcia et al., 2018; Stensvold, Nielsen, et al., 2021), *Entamoeba moshkovskii* (Stensvold et al., 2020), and *Entamoeba polecki* (Stensvold et al., 2011, 2018; Verweij et al., 2001), as well as other archamoebid species such as *Iodamoeba bütschlii* and *Endolimax nana* (Poulsen & Stensvold, 2016; Stensvold et al., 2012, 2020). Since their description, these two *E. coli* STs have been confirmed in independent studies (Calegar et al., 2021; Chihi et al., 2019, 2022; Jirků-Pomajbiková et al., 2016; Stensvold et al., 2020). Nevertheless, further sampling is necessary to evaluate whether the diversity discovered so far provides the full picture of the variation existing within this species.

For *E. hartmanni*, in contrast, *SSU rDNA* genetic diversity sufficient to justify splitting the species into subtypes was not found (Stensvold et al., 2011), and additional data produced recently (Calegar et al., 2021) did not challenge this conclusion.

Metabarcoding represents a method that can be used to detect and differentiate *SSU rDNA* sequences in complex samples. Although the assay is generally less sensitive than other DNA-based methods, such as specific real-time PCR assays, it has proven a useful tool for screening for selected parasites in one of our laboratories (Hartmeyer et al., 2019; Holmgaard et al., 2021; Krogsgaard et al., 2018; Stensvold et al., 2020; Stensvold, Jirku-Pomajbikova, et al., 2021). The method enables extraction of sequences for all non-viral organisms present in any given sample.

The aim of this study was to provide further insight into the genetic diversity of *E. coli* and *E. hartmanni* by screening *SSU rDNA* sequence data generated by

metabarcoding of 1457 human fecal samples collected on three continents.

MATERIALS AND METHODS

Data

The metabarcoding assay used has been described in detail previously (Krogsgaard et al., 2018; Stensvold et al., 2020; Stensvold, Jirku-Pomajbikova, et al., 2021). Briefly, three primer pairs of low specificity (G3, G4, and G6 primer pairs) were used to amplify nuclear *SSU rDNA*, and the PCR products were sequenced using an ILLUMINA MiSeq sequencer (ILLUMINA Inc). The resulting sequence reads were annotated to the lowest possible taxonomic level using the in-house software BION. Parts of the metabarcoding data used in the present study had been generated for various independent research projects and routine diagnostic purposes and were recently used in a separate study (Stensvold et al., 2022). Data representing fecal samples collected in Peru and Tunisia (Ascuna-Durand et al., 2020; Chihi et al., 2019, 2022) were added. Thus, the 1457 fecal DNA datasets represented populations sampled in Algeria, Denmark, Egypt, Peru, Tunisia, Turkey, and United Kingdom, with and without gastrointestinal symptoms. With respect to the local General Data Protection Regulation rules, the only metadata available for the samples were geographical origins. For sequence annotation purposes, sequences from samples from Algeria, Tunisia, and Egypt were marked with an 'A' (to denote Africa), sequences from Peru with an 'SA' (to denote South America), and sequences from Denmark, UK, and Turkey with an 'E' (to denote Europe). The number of samples screened from each region was 51, 119, 293, and 994 from Peru, Turkey, Northern Africa, and Europe, respectively.

Metabarcoding data for 1457 human fecal DNAs were screened manually to identify samples positive for *E. coli* and *E. hartmanni*. From each positive sample, FASTA files specific to *E. coli* and *E. hartmanni* were retrieved and aligned using the Clustal Omega online sequence alignment tool (available at <https://www.ebi.ac.uk/Tools/msa/clustalo/>). Consensus sequences were generated manually by visual inspection in Jalview (available at <https://www.jalview.org/>).

Of the three primer pairs targeting eukaryotic DNA, the G4 primer pair was most efficient (i.e. generated more reads) at amplifying *E. coli*-specific DNA, and so, for consistency, the *E. coli* part of the study used sequence data produced by this primer pair only. However, the *E. coli*-specific PCR product generated by the G4 primer pair covers about 690 bp of the *SSU rRNA* gene, a product size that cannot be completely sequenced using ILLUMINA MiSeq sequencing

technology (which only allows complete sequencing of products up to sizes of 500–600 bp [<https://www.illumina.com/systems/sequencing-platforms.html>]). This means that each of the sequences had a gap in the middle (i.e. the forward and reverse sequences did not overlap). For *E. hartmanni*, the G6 primer pair was most efficient at generating *E. hartmanni*-specific sequences; for these sequences, no gap was present in the middle section of the sequences.

The sequences generated in the present study were submitted to GenBank with the accession numbers ON989959–ON990035 for *E. coli* and ON974211–ON974233 for *E. hartmanni*.

Phylogenetic analysis

The part of the gene amplified for *E. coli* covered positions 630–1288 (with a sequence gap corresponding to positions 857–1041) relative to the reference sequence AF149914. The part of the gene amplified for *E. hartmanni* covered positions 566–980 (with no sequence gap) relative to the reference sequence AF149907.

For sequence alignment, consensus sequences from each sample were aligned with reference sequences from the NCBI Database spanning the sequenced regions (i.e. only reference sequences with 100% coverage of the amplified region were included). For the *E. coli* reference sequences, the region spanning the gap in the middle of the sequences was deleted from the alignment.

For both species, the manually edited sequence alignments were subject to phylogenetic analysis using the Neighbor-Joining algorithm as implemented in the MEGA7 software package (Kumar et al., 2016) with 1000 bootstrap replicates.

To further inform the inferences from the data generated in the present study, *E. coli*- and *E. hartmanni*-specific sequences derived from the 5'-end of the *SSU rRNA* genes were also downloaded from GenBank, aligned and subjected to separate phylogenetic analysis.

RESULTS

Entamoeba coli

The entire dataset for *E. coli* included 88 partial *SSU rDNA* sequences, including 77 consensus sequences from this study and 11 reference sequences. The reference sequences were annotated as *E. coli* (eight sequences of which five were from humans, two from non-human primates, and one from a rat), *E. muris* from a Mongolian gerbil (AB445018), *Entamoeba* sp. RL7 from a Phayre's leaf monkey (FR686360), and *Entamoeba* sp. RL11 from a short-tailed field vole (KR025409). The last three sequences were included

as an outgroup. The *E. coli* reference sequences were chosen to ensure representation of the known range of genetic diversity within the species while trying to avoid redundancy.

Of the 77 consensus sequences, 45 belonged to *E. coli* ST1, and 27 to *E. coli* ST2 (Figure 1). The remaining five sequences clustered with reference sequence *E. coli* S2702 (FR686364) in a distinct group with high bootstrap support (99%), which we propose to call 'ST3'; this appears to share a most recent common ancestor with ST2, although with only moderate bootstrap support. ST3 (sequence FR686364) differs from ST1 (AF149915) and ST2 (AF149914) by 7% and 11%, respectively.

Despite the fact that the *SSU rDNA* region studied was relatively small, and smaller than the region analyzed in our previous study (Stensvold et al., 2011), the topology of the tree exhibited the same overall structure as identified previously; in short, ST1 sequences were very similar, whereas several subclusters were observed within ST2 (Figure 1). The presence of subclusters within ST2 was further supported by our supplementary analysis of the 5'-end region of *E. coli* *SSU rDNA* (Figure S1). In that analysis, *E. coli* sequences from gorillas obtained by Nolan and colleagues (Nolan et al., 2017) formed an additional, well-defined sub-cluster within ST2.

Nine (thirteen percent) of the 67 *E. coli*-positive individuals were positive for more than one sequence variant. Eight individuals had two distinct consensus sequences, while one individual generated three consensus sequences (HS0440A, HS0440B, and HS0440C; phylogenetic analyses of *rDNA* sequences identified the HS0440A sequence as *E. coli* ST1, whereas HS0440B and HS0440C sequences clustered with *E. coli* ST2; Figure 1). Of note, only one of the nine individuals had two variants from within the same ST (ST2); the rest had two STs represented. The latter individuals were all from South America, and all had ST2 as one of the subtypes (ST1+ST2 were seen in seven individuals and ST2+ST3 were seen in one individual).

Entamoeba hartmanni

For *E. hartmanni*, 23 consensus sequences were generated from 19 positive individuals. Two consensus sequences could be identified in each of four individuals. The entire dataset comprised 43 sequences, including reference sequences. Three sequence clusters could be observed: one major cluster comprised most of the sequences ($n = 17$), whereas two minor clusters contained two and four consensus sequences, respectively (Figure 2). The major cluster was characterized by conspicuous heterogeneity, with only two of the 17 independent sequences sharing 100% identity. The two minor clades appeared more homogenous. For comparison, a phylogenetic analysis of

E. hartmanni sequences retrieved from the NCBI database and covering the 5' end of the *SSU rRNA* gene is provided in Figure S2.

Contrary to the situation for *E. coli*, no link between subtype and geographical origin could be observed.

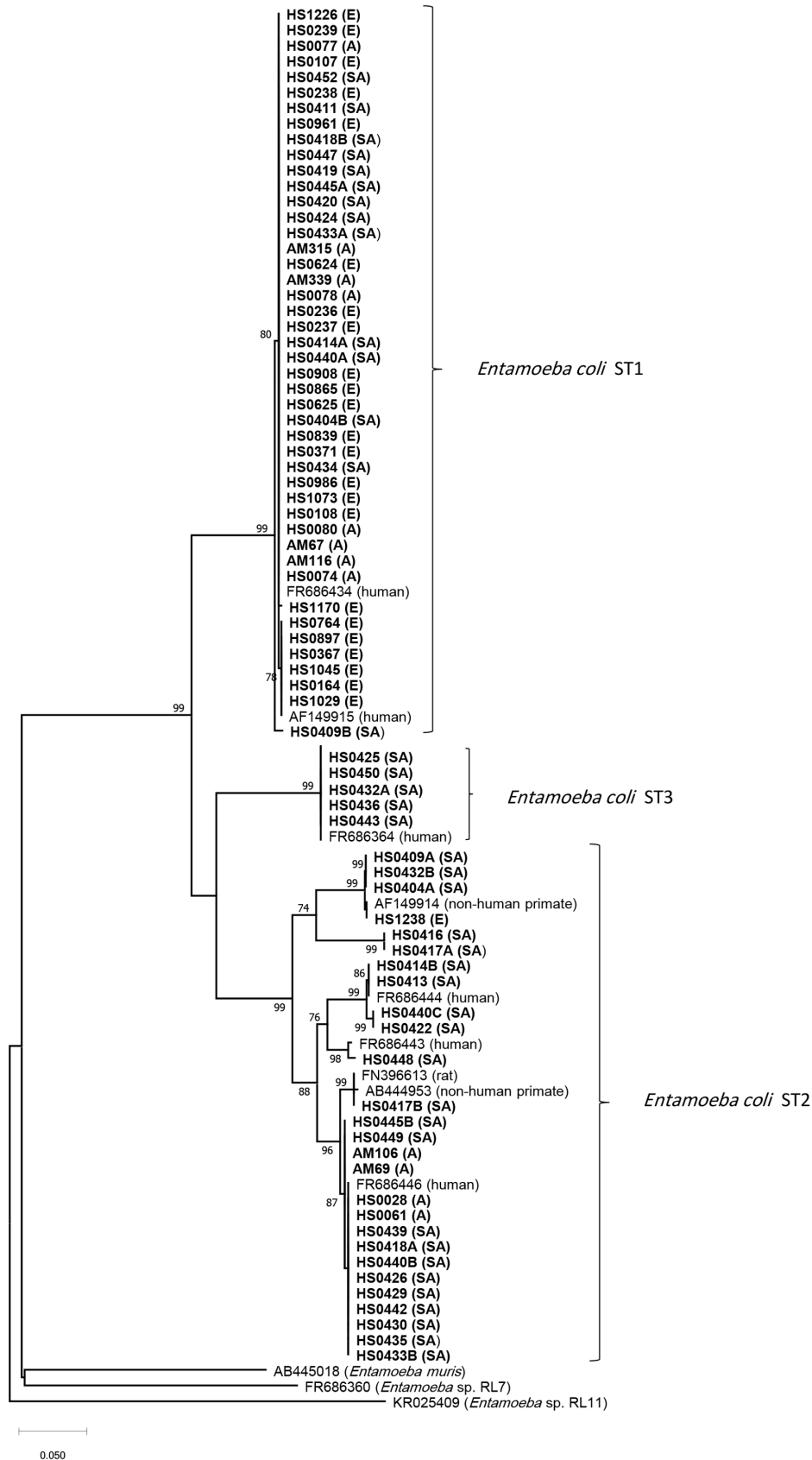


FIGURE 1 Phylogenetic analysis of *E. coli*-specific sequences generated in the present study with *E. coli* reference sequences from the NCBI nucleotide database and outgroup sequences. The two previously identified subtypes (ST1, ST2) were clearly identified, as was the proposed third subtype (ST3). The neighbor-joining method was used. Evolutionary distances were computed using the Kimura 2-parameter method. The analysis involved 88 nucleotide sequences. All ambiguous positions were removed from each sequence pair (pairwise deletion option). There were a total of 484 positions in the final dataset. The region covered corresponded to the middle part of the *SSU rRNA* gene (as opposed to the sequences included in Figure S1, which reflected the 5'-end of the gene). Only bootstrap values >70 are shown. Sequences generated in the present study are highlighted in boldface and were all from humans. Reference sequences are indicated in non-boldface type with information on host origin. Abbreviations used in parentheses for sample origin are as follows: A, Africa; E, Europe; SA, South America

DISCUSSION

Entamoeba coli

In general, molecular diversity characterization of parasites is useful not only in basic research settings but also in epidemiological surveillance, including for identification of lineages that differ in prevalence among healthy and diseased individuals and for identification of transmission patterns. *E. coli* is probably one of the most common eukaryotic intestinal endobionts of humans. With a cosmopolitan distribution, surveys of gastrointestinal parasites regularly report double-figure positivity rates; *E. coli* colonization rates of up to 44.4% have been reported in some populations in Indonesia (Cross et al., 1975; Matsumura et al., 2019). Likewise, for *E. hartmanni*, colonization rates of up to 31.3% have been reported recently (Matsumura et al., 2019).

Remarkable cryptic genetic diversity has been identified in quite a few species of intestinal endobionts, including species of *Entamoeba* (Jacob et al., 2016; Stensvold et al., 2010, 2011, 2018, 2020; Stensvold, Jirku-Pomajbikova, et al., 2021). Morphologically identical endobionts can exhibit within-species genetic divergence of up to at least 30% across the entire *SSU rRNA* gene. It should be noted that no morphology data were available for any of the samples included in this study, so any potential subtype-associated differences in the cyst size of *E. coli* could not be investigated; bi- or tri-modal distributions of cyst size have been reported on more than one occasion (Dobell, 1919; Matthews, 1919).

The genetic diversity within *E. coli* was estimated previously to be at least 13% (Stensvold et al., 2011). The present study confirmed the genetic homogeneity of ST1 and the genetic heterogeneity of ST2 previously reported (Stensvold et al., 2011). The vast majority (85%) of the ST2 sequences in the present study were generated from fecal samples collected in South America; only two were from samples collected in Africa, and one sequence was from a sample collected in Europe. ST1 sequences, on the other hand, exhibited no particular geographical bias.

The bootstrap support for including the subcluster including reference sequence S2702 (FR686364) within ST2 is relatively low. In our previous study (Stensvold et al., 2011), this sequence was designated as being part of

ST1, but also with low bootstrap support. Interestingly, the sequence was from a Nigerian woman, while the few new sequences identified from this group of *E. coli* have their origin in South America. Three other sequences in the NCBI Database also belong to this group with 99%–100% similarity: MW026736, a sequence from an individual in Brazil reported by Calegar and colleagues (Calegar et al., 2021), plus KY658178 and KY658179, which are sequences from humans in Uganda reported by Nolan et al. (2017; Figure S1). Therefore, the few sequences so far identified from this group of *E. coli* have their origin in sub-Saharan Africa and South America, and no non-human host has so far been identified to harbor *E. coli* from this cluster. Based on the distinctiveness and homogeneity of the cluster, we tentatively name it *E. coli* ST3.

Only a dozen or so *E. coli* sequences from non-human primates are available in GenBank. Of these sequences, only one belongs to *E. coli* ST1 (FR686410 from *Mandrillus leucophaeus*; Figure S1). The remainder belongs to ST2 and includes sequences from macaques, chimpanzees and gorillas (Figure S1), and non-human primates sampled in China (KX923799–KX923802; Table S1).

The full host spectrum of *E. coli*, however, remains unclear. Sequence-based evidence of *E. coli* colonization is readily available for both human and non-human primate hosts. However, the identity of cysts resembling *E. coli* in nonprimate hosts, such as pigs and dogs, remains more obscure. Sequence data are not available, and microscopy data (including images of cysts) are also typically not available or are ambiguous. A couple of related sequences from rodents are available in the NCBI nucleotide database. The sequence FN396613 was named '*Entamoeba muris*', but our phylogenetic analysis shows that this sequence is *E. coli* ST2 (Figure 1). That sequence was reported as having been generated from a fecal DNA sample from a rat in Madrid, Spain. We previously found *E. coli* ST2 in a long-tailed chinchilla (*Chinchilla lanigera*), a rodent species native to Chile (Stensvold et al., 2011); the sequence is identical to the rat sequence mentioned above. Another sequence, FN396614, was named *Entamoeba* sp. PGF-2009 and originated from a sample from a lesser rhea, a bird native to South America; this sequence also forms part of *E. coli* ST2 (Figure S2). The combined data on *E. coli* ST2 available to date indicate that ST2 may be commonly

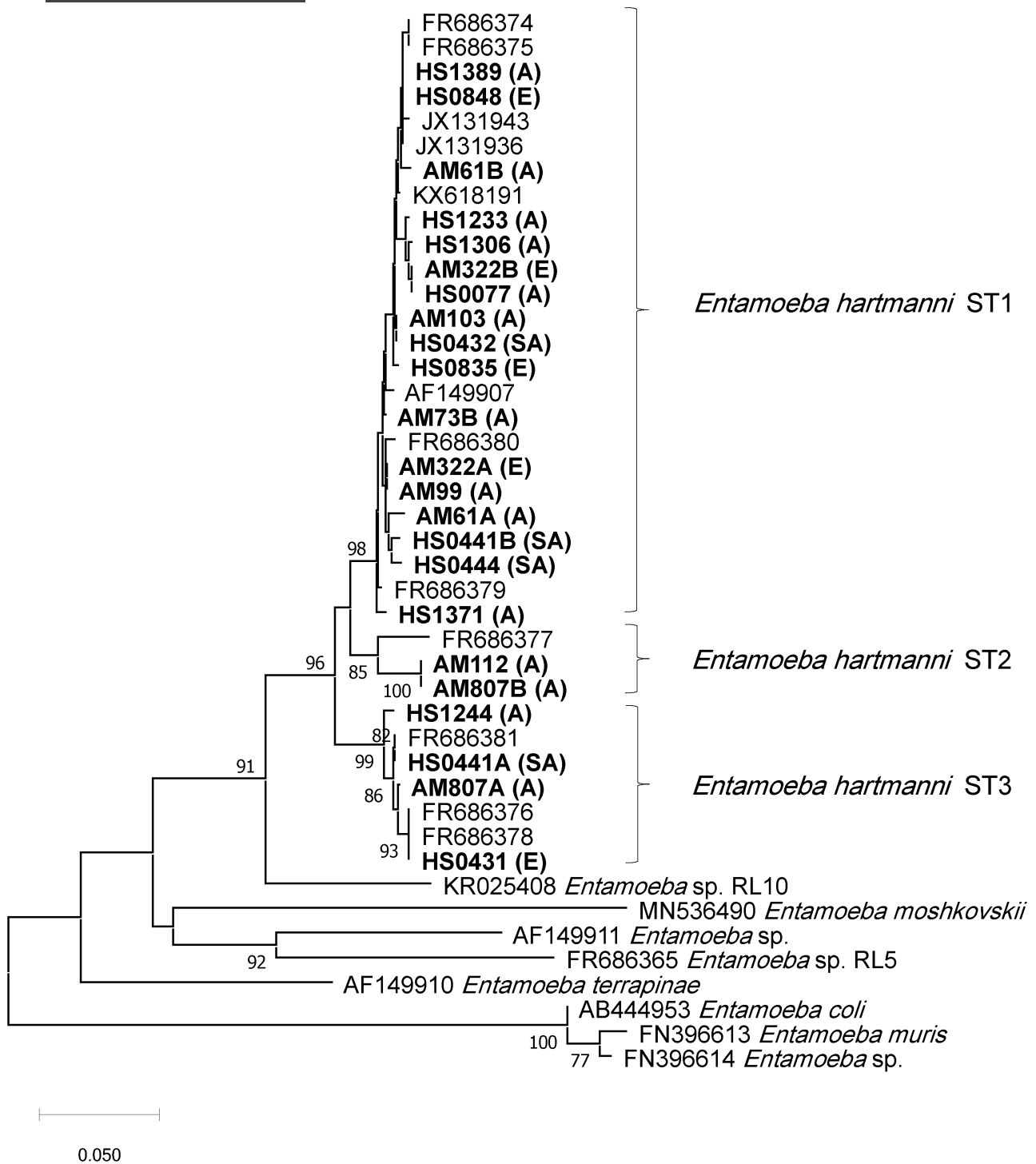


FIGURE 2 Phylogenetic analysis of *E. hartmanni*-specific sequences generated in this study with *E. hartmanni* reference sequences from the NCBI nucleotide database and outgroup sequences. Three subtypes were identified. The neighbor-joining method was used. Evolutionary distances were computed using the Kimura 2-parameter method. The analysis involved 43 nucleotide sequences. All ambiguous positions were removed from each sequence pair (pairwise deletion option). There was a total of 411 positions in the final dataset. The region covered corresponded to the middle part of the *SSU rRNA* gene (as opposed to the sequences included in Figure S2, which reflected the 5'-end of the gene). Only bootstrap values >70 are shown. Sequences generated in the present study are highlighted in boldface and were all from humans. Abbreviations used in parentheses for sample origin are as follows: A, Africa; E, Europe; SA, South America

found in various—and genetically quite different—hosts in South America. It remains unclear whether (partial) cryptic host specificity exists for any of the ST2 subclades.

Nine of the 67 *E. coli*-positive individuals had more than one sequence type, and eight of these nine were positive for both ST1 and ST2. This appears to represent an excess of mixed subtype samples given

the prevalence of *E. coli* ST1 and ST2 in the South American sample set. However, given the relatively small numbers, more sampling will be needed to confirm this observation.

In conclusion, the present study confirms the large within-species genetic diversity of *E. coli* based on a dataset comprising samples from three continents, with evidence of one new subtype and indications of an uneven geographical distribution of subtypes.

Entamoeba hartmanni

After aligning the *E. hartmanni* sequences for each sample, a few within-sample single nucleotide polymorphisms (SNPs) could be identified in most, making the manual selection of sequence reads for consensus sequences difficult. This issue was not observed for the *E. coli* sequences. Previous studies on genetic diversity in *E. hartmanni* relied on Sanger sequencing (Stensvold et al., 2011), where such SNPs might not have been evident. This means that the sequences included in the proposed ST1 (Figure 2) might not be as different as one might think from looking at the phylogenetic tree.

The tree clearly shows three clusters of *E. hartmanni*. In the previous analysis of *E. hartmanni* SSU rDNA sequences in 2011, such clustering was not visible, and we then concluded that *E. hartmanni* was a single robust species, in contrast to *E. coli*. However, in the 2011 study, the sequence region of study covered the first 600 bp (5' end) of the gene, and so the sequenced region was different from the one analyzed in the present study. This observation highlights the relevance of obtaining as near-complete SSU rDNA sequences as possible for studies that deal with genetic diversity. For independent confirmation of the proposed subtypes, and for both *E. coli* and *E. hartmanni*, it could prove informative to sequence one or more housekeeping genes from strains representing the various clades identified to date.

In the present study, *E. hartmanni* also appears to be a species complex based on the topology of the tree and the relatively high bootstrap values for each cluster. There is no clear geographical pattern to the distribution of sequences across the three clusters, but the sample size is still small for this species, limiting our ability to make epidemiological inferences for *E. hartmanni*.

Recently, we found evidence of *E. hartmanni* in pigs sampled in Denmark (Stensvold, Jirku-Pomajbikova, et al., 2021). In that study, this species was identified in 10 pigs, and all positive pigs shared the same genetic variant, which was identical to human ST1 sequence FR686375 (included in Figure 2). Thus, pigs could potentially be a reservoir for *E. hartmanni* infections in humans. Interestingly, in contrast to the human samples, the pig samples, which were also analyzed by metabarcoding, did not exhibit evidence of the SNPs mentioned above.

In our supplementary analysis of *E. hartmanni*-sequences covering the 5'-end of the SSU rRNA gene (Figure S2), the clustering that was evident in Figure 2 is absent. This might indicate that the 5'-end of the SSU rRNA gene does not hold sufficient diversity to show this within *E. hartmanni*.

A complete list of the *E. hartmanni*-specific sequences in the NCBI database to date is provided in Table S2.

CONCLUSION

In the present study, we confirm the existence of *E. coli* ST1 and ST2 and find evidence of an additional subtype, ST3. For *E. hartmanni*, our data suggest the existence of three subtypes, whereas previous analyses, using other regions of the SSU rRNA gene, failed to find genetically distinct clusters. For *E. coli*, ST1 appears to be mainly anthroponotic and to have a cosmopolitan distribution, whereas ST2 appears to be limited mostly to the southern hemisphere and with less strict host specificity. More sampling, however, might reveal cryptic host specificity within ST2. For *E. coli* ST3 and the *E. hartmanni* subtypes, data are still too limited to make conclusions on host specificity and geographic distribution.

ORCID

Christen Rune Stensvold  <https://orcid.org/0000-0002-1417-7048>
 Ayman El-Badry  <https://orcid.org/0000-0002-9673-2622>
 C. Graham Clark  <https://orcid.org/0000-0002-0521-0977>

REFERENCES

- Ascuna-Durand, K., Salazar-Sanchez, R.S., Castillo-Neyra, R. & Ballon-Echegaray, J. (2020) Relative frequency of *Blastocystis* subtypes 1, 2, and 3 in urban and periurban human populations of Arequipa, Peru. *Tropical Medicine and Infectious Disease*, 5, 178.
- Calegar, D.A., Monteiro, K.J.L., Bacelar, P.A.A., Evangelista, B.B.C., Almeida, M.M., Dos Santos, J.P. et al. (2021) Epidemiology, species composition and genetic diversity of tetra- and octonucleated *Entamoeba* spp. in different Brazilian biomes. *Parasites & Vectors*, 14, 160.
- Campos Filho, P.C., Barros, L.M., Campos, J.O., Braga, V.B., Cazorla, I.M., Albuquerque, G.R. et al. (2008) Zoonotic parasites in dog feces at public squares in the municipality of Itabuna, Bahia, Brazil. *Revista Brasileira de Parasitologia Veterinária*, 17, 206–209.
- Cembranelli, S.B., Souto, F.O., Ferreira-Paim, K., Richinho, T.T., Nunes, P.L., Nascentes, G.A. et al. (2013) First evidence of genetic intraspecific variability and occurrence of *Entamoeba gingivalis* in HIV(+)/AIDS. *PLoS One*, 8, e82864.
- Chihi, A., O'Brien Andersen, L., Aoun, K., Bouratbine, A. & Stensvold, C.R. (2022) Amplicon-based next-generation sequencing of eukaryotic nuclear ribosomal genes (metabarcoding) for the detection of single-celled parasites in human faecal samples. *Parasite Epidemiology and Control*, 17, e00242.
- Chihi, A., Stensvold, C.R., Ben-Abda, I., Ben-Romdhane, R., Aoun, K., Siala, E. et al. (2019) Development and evaluation

- of molecular tools for detecting and differentiating intestinal amoebae in healthy individuals. *Parasitology*, 146, 821–827.
- Cross, J.H., Clarke, M.D., Durfee, P.T., Irving, G.S., Taylor, J., Partono, F. et al. (1975) Parasitology survey and seroepidemiology of amoebiasis in South Kalimantan (Borneo), Indonesia. *The Southeast Asian Journal of Tropical Medicine and Public Health*, 6, 52–60.
- Dobell, C. (1919) *The amoebae living in man. A zoological monograph*. London: John Bale, Sons & Danielson.
- Garcia, G., Ramos, F., Maldonado, J., Fernandez, A., Yanez, J., Hernandez, L. et al. (2018) Prevalence of two *Entamoeba gingivalis* ST1 and ST2-kamaktli subtypes in the human oral cavity under various conditions. *Parasitology Research*, 117, 2941–2948.
- Hartmeyer, G.N., Stensvold, C.R., Fabricius, T., Marmolin, E.S., Hoegh, S.V., Nielsen, H.V. et al. (2019) *Plasmodium cynomolgi* as cause of malaria in tourist to Southeast Asia, 2018. *Emerging Infectious Diseases*, 25, 1936–1939.
- Holmgaard, D.B., Barnadas, C., Mirbarati, S.H., Andersen, L.O., Nielsen, H.V. & Stensvold, C.R. (2021) Detection and identification of *acanthamoeba* and other non-viral causes of infectious keratitis in corneal scrapings by real-time PCR and next-generation sequencing-based 16S-18S gene analysis. *Journal of Clinical Microbiology*, 59, e02224–20.
- Jacob, A.S., Busby, E.J., Levy, A.D., Komm, N. & Clark, C.G. (2016) Expanding the *Entamoeba* universe: new hosts yield novel ribosomal lineages. *The Journal of Eukaryotic Microbiology*, 63, 69–78.
- Jirků-Pomajbíková, K., Čepička, I., Kalousová, B., Jirků, M., Stewart, F., Levecke, B. et al. (2016) Molecular identification of *Entamoeba* species in savanna woodland chimpanzees (*pan troglodytes schweinfurthii*). *Parasitology*, 143, 741–748.
- Kobayashi, S., Suzuki, J. & Takeuchi, T. (2009) Establishment of a continuous culture system for *Entamoeba muris* and analysis of the small subunit rRNA gene. *Parasite*, 16, 135–139.
- Krogsgaard, L.R., Andersen, L.O., Johannesen, T.B., Engsbro, A.L., Stensvold, C.R., Nielsen, H.V. et al. (2018) Characteristics of the bacterial microbiome in association with common intestinal parasites in irritable bowel syndrome. *Clinical and Translational Gastroenterology*, 9, 161.
- Kumar, S., Stecher, G. & Tamura, K. (2016) MEGA7: molecular evolutionary genetics analysis version 7.0 for bigger datasets. *Molecular Biology and Evolution*, 33, 1870–1874.
- Matsumura, T., Hendarto, J., Mizuno, T., Syafruddin, D., Yoshikawa, H., Matsubayashi, M. et al. (2019) Possible pathogenicity of commensal *Entamoeba hartmanni* revealed by molecular screening of healthy school children in Indonesia. *Tropical Medicine and Health*, 47, 7.
- Matthews, J.R. (1919) A mensurative study of the cysts of *Entamoeba coli*. *Annals of Tropical Medicine and Parasitology*, 12, 259–272.
- Nolan, M.J., Unger, M., Yeap, Y.T., Rogers, E., Millet, I., Harman, K. et al. (2017) Molecular characterisation of protist parasites in human-habituated mountain gorillas (*gorilla beringei beringei*), humans and livestock, from Bwindi impenetrable National Park, Uganda. *Parasites & Vectors*, 10, 340.
- Pinilla, J.C., Morales, E. & Munoz, A.A.F. (2021) A survey for potentially zoonotic parasites in backyard pigs in the Bucaramanga metropolitan area, Northeast Colombia. *Veterinary World*, 14, 372–379.
- Poulsen, C.S. & Stensvold, C.R. (2016) Systematic review on *Endolimax nana*: a less well studied intestinal ameba. *Tropical Parasitology*, 6, 8–29.
- Stensvold, C.R., Jirku-Pomajbíková, K., Tams, K.W., Jokelainen, P., Berg, R., Marving, E. et al. (2021) Parasitic intestinal protists of zoonotic relevance detected in pigs by metabarcoding and real-time PCR. *Microorganisms*, 9, 1189.
- Stensvold, C.R., Lebbad, M. & Clark, C.G. (2010) Genetic characterisation of uninucleated cyst-producing *Entamoeba* spp. from ruminants. *International Journal for Parasitology*, 40, 775–778.
- Stensvold, C.R., Lebbad, M. & Clark, C.G. (2012) Last of the human protists: the phylogeny and genetic diversity of *Iodamoeba*. *Molecular Biology and Evolution*, 29, 39–42.
- Stensvold, C.R., Lebbad, M., Hansen, A., Beser, J., Belkessa, S., O'Brien Andersen, L. et al. (2020) Differentiation of *Blastocystis* and parasitic archamoebids encountered in untreated wastewater samples by amplicon-based next-generation sequencing. *Parasite Epidemiology and Control*, 9, e00131.
- Stensvold, C.R., Lebbad, M., Victory, E.L., Verweij, J.J., Tannich, E., Alfellani, M. et al. (2011) Increased sampling reveals novel lineages of *Entamoeba*: consequences of genetic diversity and host specificity for taxonomy and molecular detection. *Protist*, 162, 525–541.
- Stensvold, C.R., Nielsen, M., Baraka, V., Lood, R., Fuursted, K. & Nielsen, H.V. (2021) *Entamoeba gingivalis*: epidemiology, genetic diversity and association with oral microbiota signatures in north eastern Tanzania. *Journal of Oral Microbiology*, 13, 1924598.
- Stensvold, C.R., Sorland, B.A., Berg, R., Andersen, L.O., van der Giezen, M., Bowtell, J.L. et al. (2022) Stool microbiota diversity analysis of *Blastocystis*-positive and *Blastocystis*-negative individuals. *Microorganisms*, 10, 326.
- Stensvold, C.R., Winiecka-Krusnell, J., Lier, T. & Lebbad, M. (2018) Evaluation of a PCR method for detection of *Entamoeba polecki*, with an overview of its molecular epidemiology. *Journal of Clinical Microbiology*, 56, e00154-18.
- Verweij, J.J., Polderman, A.M. & Clark, C.G. (2001) Genetic variation among human isolates of uninucleated cyst-producing *Entamoeba* species. *Journal of Clinical Microbiology*, 39, 1644–1646.

SUPPORTING INFORMATION

Additional supporting information can be found online in the Supporting Information section at the end of this article.

How to cite this article: Stensvold, C.R., Ascuña-Durand, K., Chihi, A., Belkessa, S., Kurt, Ö. & El-Badry, A. et al. (2022) Further insight into the genetic diversity of *Entamoeba coli* and *Entamoeba hartmanni*. *Journal of Eukaryotic Microbiology*, 00, e12949. Available from: <https://doi.org/10.1111/jeu.12949>