



## Research: Care Delivery

# Variation in the achievement of HbA<sub>1c</sub>, blood pressure and LDL cholesterol targets in type 2 diabetes in general practice and characteristics associated with risk factor control

Å. Bakke<sup>1,2</sup> , I. Dalen<sup>3</sup>, G. Thue<sup>2,4</sup>, J. Cooper<sup>1,4</sup> , S. Skeie<sup>1,5</sup>, T. J. Berg<sup>6,7</sup>, A. K. Jenum<sup>8</sup>, T. Claudi<sup>9</sup>, K. Fjeld Løvaas<sup>4</sup> and S. Sandberg<sup>2,4,10</sup>

<sup>1</sup>Department of Medicine, Stavanger University Hospital, Stavanger, <sup>2</sup>Department of Global Public Health and Primary Care, University of Bergen, Bergen, <sup>3</sup>Department of Research, Section of Biostatistics, Stavanger University Hospital, Stavanger, <sup>4</sup>Norwegian Organization for Quality Improvement of Laboratory Examinations (Noklus), Haraldsplass Deaconess Hospital, Bergen, <sup>5</sup>Department of Clinical Science, Faculty of Medicine, University of Bergen, Bergen, <sup>6</sup>Institute of Clinical Medicine, Faculty of Medicine, University of Oslo, Oslo, <sup>7</sup>Department of Endocrinology, Morbid Obesity and Preventive Medicine, Oslo University Hospital, Oslo, <sup>8</sup>General Practice Research Unit (AFE), Department of General Practice, Institute of Health and Society, University of Oslo, Oslo, <sup>9</sup>Nordland Hospital, Department of Medicine, Bodø, and <sup>10</sup>Department of Medical Biochemistry and Pharmacology, Haukeland University Hospital, Bergen, Norway

Accepted 23 October 2019

**Aims** To identify population, general practitioner, and practice characteristics associated with the achievement of HbA<sub>1c</sub>, blood pressure and LDL cholesterol targets, and to describe variation in the achievement of risk factor control.

**Methods** We conducted a cross-sectional survey of 9342 people with type 2 diabetes, 281 general practitioners and 77 general practices in Norway. Missing values (7.4%) were imputed using multiple imputation by chained equations. We used three-level logistic regression with the achievement of HbA<sub>1c</sub>, blood pressure and LDL cholesterol targets as dependent variables, and factors related to population, general practitioners, and practices as independent variables.

**Results** Treatment targets were achieved for HbA<sub>1c</sub> in 64%, blood pressure in 50%, and LDL cholesterol in 52% of people with type 2 diabetes, and 17% met all three targets. There was substantial heterogeneity in target achievement among general practitioners and among practices; the estimated proportion of a GPs diabetes population at target was 55–73% (10–90 percentiles) for HbA<sub>1c</sub>, 36–63% for blood pressure, and 47–57% for LDL cholesterol targets. The models explained 11%, 5% and 14%, respectively, of the total variation in the achievement of HbA<sub>1c</sub>, blood pressure and LDL cholesterol targets. Use among general practitioners of a structured diabetes form was associated with 23% higher odds of achieving the HbA<sub>1c</sub> target (odds ratio 1.23, 95% confidence interval (CI) 1.02–1.47) and 17% higher odds of achieving the LDL cholesterol target (odds ratio 1.17, 95% CI 1.01–1.35).

**Conclusions** Clinical diabetes management is difficult, and few people meet all three risk factor control targets. The proportion of people reaching target varied among general practitioners and practices. Several population, general practitioner and practice characteristics only explained a small part of the total variation. The use of a structured diabetes form is recommended.

Diabet. Med. 00, 1–11 (2019)

## Introduction

People with type 2 diabetes have a doubled risk of death and cardiovascular disease compared with the general population [1]. The risk increases with each risk factor above target [2]. A meta-analysis of randomized controlled trials (RCTs) has shown a linear relationship between the reduction in HbA<sub>1c</sub>

and major cardiovascular events [3]. Another meta-analysis of RCTs, showed that reaching blood pressure targets was associated with decreased risk of diabetes-related mortality [4]. Additionally, very low LDL cholesterol level was associated with reduced cardiovascular risk in people with type 2 diabetes [5]. It is therefore important for people with diabetes to achieve HbA<sub>1c</sub>, blood pressure and LDL cholesterol targets.

Healthcare services in Norway are state-funded. Each member of the population is listed with one specific general practitioner (GP). GPs provide care for most individuals with type 2 diabetes; however, they do not receive financial incentives for the provision of a high quality of clinical care.

Correspondence to: Åsne Bakke. E-mail: asne.bakke@sus.no

This is an open access article under the terms of the Creative Commons Attribution-NonCommercial License, which permits use, distribution and reproduction in any medium, provided the original work is properly cited and is not used for commercial purposes.

**What's new?**

- Only one in five of those with type 2 diabetes in primary care in Norway met all three targets for HbA<sub>1c</sub>, blood pressure and LDL cholesterol.
- There was substantial heterogeneity in the achievement of HbA<sub>1c</sub>, blood pressure and LDL cholesterol targets among general practitioners and practices.
- The heterogeneity in risk factor control remained after adjustment for case mix.
- Detailed analysis with 12 population-related, 10 general practitioner-related and four practice-related factors explained <15% of the total variation in target achievement.
- Most of the variation was at the population level.
- Young people, obese people and those with macrovascular complications achieved targets less frequently.
- The use of a structured diabetes form is recommended.

In a recent study, we found major gaps between national diabetes guidelines and the performance of screening to detect microvascular complications, with significant heterogeneity among GPs within general practices [6]. The aim of the present study was to examine how population characteristics and available GP and practice characteristics were associated with the achievement of HbA<sub>1c</sub>, blood pressure and LDL cholesterol targets. In addition, we describe variation in the achievement of targets.

**Participants and methods**

We used data from the ROSA 4 study, a cross-sectional survey designed to assess the quality of diabetes care in general practice in Norway in 2014. Verified and representative data from electronic health records in three of the four health regions in Norway were collected and are described in detail elsewhere [6].

In the present study we included 9342 adults (age  $\geq 18$  years) with type 2 diabetes (T90 in the International Classification of Primary Care) who had their main follow-up in their general practice, and who had a diabetes duration of  $\geq 6$  months (Fig. 1). The included population was treated by 281 GPs at 77 practices (73% and 77%, respectively, of those invited to contribute data). Socio-economic variables were obtained from Statistics Norway. Two questionnaires were used to gather GP and practice characteristics (completed in 99% and 100% of cases).

The outcome variables were defined according to national guidelines from 2009: HbA<sub>1c</sub>  $\leq 53$  mmol/mol ( $\leq 7.0\%$ ), blood pressure  $\leq 135/80$  mmHg/ $\leq 140/85$  mmHg (with/without anti-hypertensive medication) and LDL cholesterol  $\leq 1.8$  mmol/l

with cardiovascular disease, or  $\leq 2.5/\leq 3.5$  mmol/l without cardiovascular disease with/without lipid-lowering medication. We used the most recent target value between 1 October 2013 and 31 December 2014, although, if none was available, the search period was extended backwards to 1 January 2012 (7.8% of HbA<sub>1c</sub> measurements and 19.1% of LDL cholesterol measurements).

As explanatory variables, we included 12 diabetes population characteristics (demographics, socio-economic status, complications), 10 GP characteristics (demographics, speciality status and proxies for workload and routines), and four practice characteristics (location, proxies for practice size and routines); Table 1a,b.

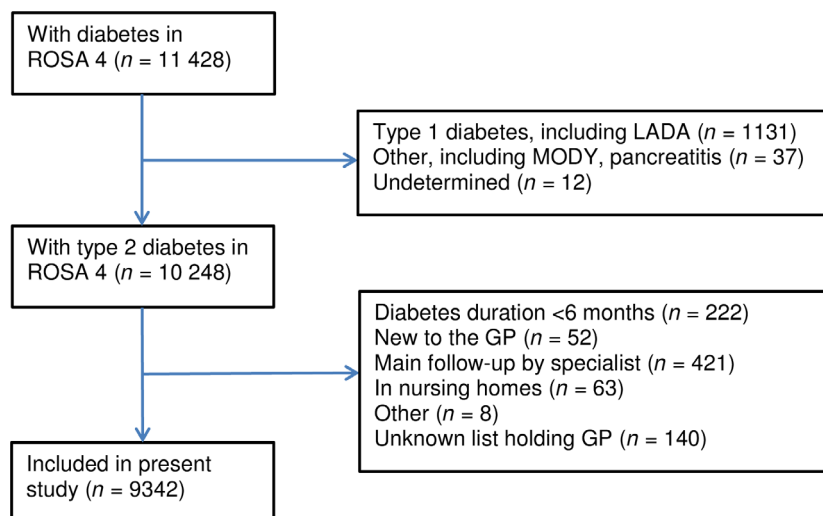
**Statistical analyses**

Descriptive statistics are presented as medians with 10<sup>th</sup> and 90<sup>th</sup> percentiles for continuous variables, and counts and percentages for categorical variables. Missing information regarding individuals with diabetes (7.4%) was imputed using multiple imputation by chained equations with predictive mean matching, allowing for the multilevel structure of the data [7]. In addition to the variables in the main models, the imputations included the following as auxiliary variables: weight; height; HbA<sub>1c</sub>; systolic blood pressure; diastolic blood pressure; total cholesterol; HDL cholesterol; LDL cholesterol; triglycerides; retinopathy; atrial fibrillation; dialysis; and kidney transplantation. We produced 100 imputed datasets. Furthermore, number of years practising in Norway was unknown for 11 GPs, and was single-imputed based on the year of Norwegian authorization, which was known for all GPs.

The associations between the outcomes and population, GP and practice characteristics were analysed in three-level logistic regression models including random intercepts for GPs (level 2) and practices (level 3). Continuous explanatory variables with severely non-linear effects on the log-odds were analysed on a categorized scale. Variance inflation factors were estimated to check for multicollinearity. We report odds ratios (ORs) with 95% CIs for the achievement of targets. Because of the large sample size and multiple testing, corresponding chi-squared *P* values  $\leq 0.01$  for population characteristics and  $\leq 0.05$  for GP and practice characteristics were considered statistically significant. The models were fitted using adaptive Gaussian quadrature with seven integration points. Results from the imputed datasets were averaged by Rubin's rules.

The proportion of variance explained by each full model was estimated from the variance of the linear predictor for the fixed portion of the model and from the estimated random intercepts variances [8].

Heterogeneity in the achievement of targets among GPs within practices was illustrated by means of 'caterpillar' plots of empirical Bayes estimates of target achievement proportions, obtained from three-level models without fixed effects



**FIGURE 1** Flow chart of the exclusion process of participants in the ROSA 4 study (Rogaland-Oslo-Salten-Akershus-Hordaland study in 2014). GP, general practitioner; LADA, latent autoimmune diabetes in adults; MODY, maturity-onset diabetes of the young.

fitted to the original data, and with percentiles from the empirical Bayes distributions. The total variation in the plots reflects the sum of GP and practice random effects.

Furthermore, median ORs were calculated from the estimated random intercept variances to quantify the cluster heterogeneity [9], and are presented for GPs, practices, and GPs and practices combined.

Finally, intraclass correlation coefficients were used to estimate the proportion of outcome or residual variation attributed to GPs, practices, and GPs within practices. The CIs of intraclass correlation coefficients were estimated using the logit transform as described in the *STATA* documentation of *estat icc*, with standard errors estimated by the delta method [10].

Supplementary analyses included linear regression analysis with continuous outcomes and complete-case analysis.

The Venn diagram was made in *PYTHON* version 3.7 with package *matplotlib*. Imputation was performed in *R* version 3.4 with packages *mice* and *miceadds*. For the regression modelling, *STATA* version 15.1 was used with functions *mi estimate*, *melogit*, *mixed*, and *mimrgns*.

## Ethics

The study was approved by the Regional Health Committee in Norway (REK 2014/1374, REK Vest).

## Results

The included population ( $n=9342$ ; Fig. 1) was treated by 281 GPs at 77 practices (Table 1a,b). For the diabetes population in which HbA<sub>1c</sub>, blood pressure and LDL cholesterol values were available for all ( $n=7086$ ), 64% achieved the HbA<sub>1c</sub> target, 50% the blood pressure target and 52% the LDL cholesterol target, and 17% met all three targets (Fig. 2). The

median (10<sup>th</sup>–90<sup>th</sup> percentile) values were as follows: HbA<sub>1c</sub> 51 (40–68) mmol/mol [6.8 (5.8–8.4%)]; systolic blood pressure 134 (116–156) mmHg; diastolic blood pressure 80 (66–90) mmHg; and LDL cholesterol 2.6 (1.6–4.0).

Tables 2a and 2b show the estimated associations between the achievement of targets and population, GP and practice characteristics.

## HbA<sub>1c</sub>

Compared with people in the age group 60–69 years, those aged <50 years were less likely to achieve the HbA<sub>1c</sub> target (OR 0.60, 95% CI 0.51–0.71), while those aged ≥70 years were more likely to achieve the target (Table 2a). Men, people born outside Western Europe, and people with obesity had lower odds of attaining the target. Long diabetes duration was also negatively associated with the achievement of HbA<sub>1c</sub> target (OR 0.65, 95% CI 0.62–0.67) per 5-year increase. People who had undergone bariatric surgery had almost three times higher odds of attaining the HbA<sub>1c</sub> target (OR 2.78, 95% CI 1.82–4.25). People attending GPs who were regular users of a structured diabetes form had 23% higher odds of attaining the HbA<sub>1c</sub> target, (OR 1.23, 95% CI 1.02–1.47; Table 2b).

## Blood pressure

People aged < 50 years were more likely to achieve blood pressure targets (OR 1.49, 95% CI 1.26–1.77). Non-Western ethnicity was positively associated with the achievement of the blood pressure target, in particular South Asian ethnicity (OR 1.99, 95% CI 1.61–2.46). Current smokers had higher odds of achieving the blood pressure target (OR 1.20, 95% CI 1.05–1.38). Obese people had reduced odds of achieving the target (OR 0.76, 95% CI 0.66–0.87), while those with BMI < 25 kg/m<sup>2</sup> had increased odds of attaining blood

**Table 1a** Characteristics of 9342 people with type 2 diabetes included in the study

	Missing observations <i>n</i> (%)	Observed median (10 <sup>th</sup> –90 <sup>th</sup> percentiles) or count (%)
Men	-	5110 (55)
Age	-	66 (48–82)
< 50 years		1194 (13)
50–59 years		1884 (20)
60–69 years		2766 (30)
70–79 years		2231 (24)
≥ 80 years		1267 (14)
Ethnicity	7 (0.1)	
Western European/ North American*		7766 (83)
South Asian†		726 (7.8)
Other		843 (9.0)
Education	181 (1.9)	
Primary school	-	3373 (37)
High school/apprenticeship	-	4102 (45)
University	-	1686 (18)
Diabetes duration (years)	562 (6.0)	7 (1–18)
Smoking status	1933 (21)	
Never smoked		3315 (45)
Ex-smoker		2413 (33)
Current smoker		1681 (23)
BMI	5153 (55)	29 (24–38)
< 25 kg/m <sup>2</sup>		772 (18)
25–29.9 kg/m <sup>2</sup>		1558 (37)
≥ 30 kg/m <sup>2</sup>		1859 (44)
Bariatric surgery	12 (0.1)	143 (1.5)
Macrovascular complications‡	22 (0.2)	2513 (27)
Foot ulcer	13 (0.1)	251 (2.7)
Lower limb amputation	8 (0.1)	55 (0.6)
Estimated GFR	452 (4.8)	
> 60 ml/min/1.73 m <sup>2</sup>		7489 (84)
45–59 ml/min/1.73 m <sup>2</sup>		839 (9.4)
30–44 ml/min/1.73 m <sup>2</sup>		400 (4.5)
< 30 ml/min/1.73 m <sup>2</sup>		162 (1.8)

\*Born in Western Europe or North America. †Born in Bangladesh, India, Pakistan or Sri-Lanka. ‡Composite variable of either coronary heart disease, stroke and/or peripheral arterial surgery.

pressure target compared with those with BMI 25–29.9 kg/m<sup>2</sup> (OR 1.40, 95% CI 1.17–1.68). No GP or practice characteristics were associated with the achievement of the blood pressure target in our model.

### LDL cholesterol

Men had higher odds of achieving the LDL cholesterol target compared with women (OR 1.51, 95% CI 1.36–1.67). A positive association with the achievement of LDL cholesterol target was found in people of other ethnicity compared with those of Western European/North American and South Asian ethnicity (OR 1.39, 95% CI 1.16–1.66) and ex-smokers (OR 1.24, 95% CI 1.09–1.40). For each 5-year increase in diabetes duration, the odds of reaching the LDL cholesterol target increased by 18% (OR 1.18, 95% CI 1.13–1.23). People with macrovascular complications were less likely to

**Table 1b** Characteristics of 281 general practitioners and 77 practices included in the study

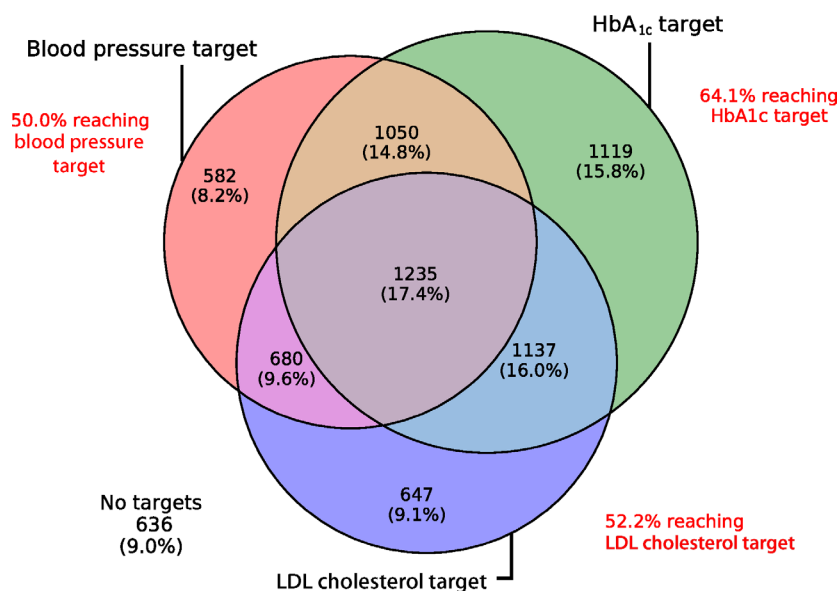
	Missing observations, <i>n</i> (%)	Observed median (10 <sup>th</sup> –90 <sup>th</sup> percentiles) or count (%)
GPs ( <i>n</i> = 281)		
Men	-	155 (55)
Age	-	50 (34–64)
< 40 years		65 (23)
40–49 years		75 (27)
50–59 years		65 (23)
≥ 60 years		76 (27)
Born outside Norway	-	53 (19)
Medical education outside Norway	-	82 (29)
Years as a GP in Norway	11 (3.9)	18 (3–35)
≤ 5 years as a GP in Norway		49 (18)/(20)*
Specialist in general practice	-	189 (67)
Number of people with type 2 diabetes on list	-	34 (14–60)
< 25		66 (24)
25–49		132 (47)
≥ 50		83 (30)
Clinical days per week > 3	-	229 (82)
Total number of people on GP's list per day worked each week	-	296 (218–392)
< 225		73 (26)
225–300		81 (29)
301–375		94 (34)
> 375		33 (12)
User of a structured diabetes form†	-	73 (26)
Practice ( <i>n</i> = 77)		
County		
Oslo	-	12 (16)
Akershus	-	10 (13)
Hordaland	-	10 (13)
Rogaland	-	19 (25)
Nordland	-	26 (34)
Number of GPs per office	-	3 (1–6)
Number of people on list per full-time ancillary staff	-	1427 (805–1989)
< 1250		24 (31)
1250–1750		35 (46)
> 1750		18 (23)
Routines of annual diabetes review/reminders	-	19 (25)

GP, general practitioner.  
\*Percentage after imputation. †GP defined as a user of the form if used in ≥10 people with diabetes or more than 50% of the people with diabetes on the GP's list.

achieve the LDL cholesterol target (OR 0.20, 95% CI 0.18–0.22). GP users of a structured diabetes form had 17% higher odds of getting the individuals with diabetes to the LDL cholesterol target (OR 1.17, 95% CI 1.01–1.35).

### Supplementary analyses

In supplementary analyses, models with continuous outcomes mostly paralleled results from the logistic regression



**FIGURE 2** Proportion of people with type 2 diabetes achieving HbA<sub>1c</sub>, blood pressure and LDL cholesterol targets where measurements were available for all ( $n=7086$ ). HbA<sub>1c</sub> target:  $\leq 53$  mmol/mol ( $\leq 7.0\%$ ); blood pressure target:  $\leq 135/80$  mmHg/ $\leq 140/85$  mmHg (with/without anti-hypertensive medication); LDL cholesterol target:  $\leq 1.8$  mmol/l with cardiovascular disease, or without cardiovascular disease,  $\leq 2.5/3.5$  mmol/l with/without lipid-lowering medication.

analysis (Table S1). Predicted probabilities are presented in Table S2. In the complete-case analyses ( $n=3530$  for HbA<sub>1c</sub> target,  $n=3462$  for blood pressure target,  $n=3308$  for LDL cholesterol target; data not shown), there were only minor changes in the effect estimates, that is, the effect of using a diabetes form was slightly reduced, in particular for achieving the LDL cholesterol target which was non-significant. In analyses excluding people aged  $\geq 80$  years, the results were similar to the full model (data not shown).

### Variation

The fixed effects of the full model explained 11% of the variation in achievement of HbA<sub>1c</sub> target, whereas fixed and random effects together explained 16% of the variation. The corresponding results for the blood pressure target were 5% and 11%, and for LDL cholesterol target 14% and 16%.

We found statistically significant variation among GPs and among practices for all targets. Figures 3a–c show the variation in predicted proportions of target achievement for the individual GPs within practices. For the HbA<sub>1c</sub> target, 80% of GPs within practices were predicted to lie between 55% and 73% target achievement. For blood pressure target the variation was bigger, with the 10<sup>th</sup> to 90<sup>th</sup> percentile predicted target achievement range being 36% to 63%; whereas for LDL cholesterol the corresponding range was 47% to 57%.

Similarly, individuals treated by a well-performing GP within a well-performing practice had a median 50% higher odds of HbA<sub>1c</sub> target achievement than those treated by a GP with poorer performance at a practice with poorer results (median OR 1.50, 95% CI 1.36–1.73). For blood pressure

and LDL cholesterol targets the corresponding median ORs were 1.61 (95% CI 1.45–1.85) and 1.28 (95% CI 1.19–1.53), respectively. Apart from for LDL cholesterol, the heterogeneity was distributed relatively evenly between GPs and practices, and changed only slightly when adjusting for population, GP and practice factors (Table S3).

By contrast, the residual variation in target achievement was mostly between individuals. The unconditional combined intraclass correlation coefficients for GPs within practices were 5.3 (95% CI 3.7–7.5)%, 7.0 (95% CI 5.2–9.6)% and 2.3 (95% CI 1.4–3.8)% for the HbA<sub>1c</sub>, blood pressure and LDL cholesterol targets, respectively, and the conditional intraclass correlation coefficients from adjusted models were similar.

### Discussion

Clinical management of diabetes is difficult, and only one in five achieved all three targets for HbA<sub>1c</sub>, blood pressure and LDL cholesterol. This is one of few studies with several explanatory variables on three levels that aim to explore variation in, and factors associated with, the achievement of targets [11]. Young people (age  $< 50$  years), people with obesity and those with long diabetes duration were less likely to achieve the HbA<sub>1c</sub> target, while people with macrovascular disease had lower odds of achieving the LDL cholesterol target. We observed that a small positive effect on the achievement of HbA<sub>1c</sub> and LDL cholesterol targets was related to GP usage of a structured diabetes form. After adjusting for case mix, there was a moderate residual heterogeneity in target achievement among GPs within

**Table 2a** Characteristics of people with type 2 diabetes with adjusted\* odds ratios for the achievement of HbA<sub>1c</sub>, blood pressure or LDL cholesterol target

Characteristics	HbA <sub>1c</sub> target <sup>†</sup>		Blood pressure target <sup>‡</sup>		LDL cholesterol target <sup>§</sup>	
	OR (95% CI)	P	OR (95% CI)	P	OR (95% CI)	P
N = 9342						
Men	0.87 (0.79, 0.96)	0.005	0.96 (0.87, 1.06)	0.43	1.51 (1.36, 1.67)	<0.001
Age						
< 50 years	0.60 (0.51, 0.71)	<0.001	1.49 (1.26, 1.77)	<0.001	1.11 (0.94, 1.31)	0.23
50–59 years	0.72 (0.63, 0.82)	<0.001	1.15 (1.01, 1.32)	0.038	0.95 (0.83, 1.09)	0.47
60–69 years	1		1		1	
70–79 years	1.36 (1.19, 1.56)	<0.001	0.84 (0.74, 0.96)	0.009	1.18 (1.03, 1.34)	0.015
≥ 80 years	1.26 (1.06, 1.51)	0.010	0.69 (0.58, 0.82)	<0.001	1.21 (1.01, 1.45)	0.04
Ethnicity						
Western European/North American <sup>¶</sup>	1		1		1	
South Asian <sup>**</sup>	0.66 (0.54, 0.80)	<0.001	1.99 (1.61, 2.46)	<0.001	1.28 (1.04, 1.56)	0.019
Other	0.67 (0.56, 0.79)	<0.001	1.48 (1.24, 1.78)	<0.001	1.39 (1.16, 1.66)	<0.001
Education						
Primary school	1		1		1	
High school/apprenticeship	1.06 (0.95, 1.18)	0.30	1.07 (0.96, 1.19)	0.20	1.06 (0.95, 1.18)	0.28
University	1.02 (0.89, 1.17)	0.79	1.02 (0.89, 1.18)	0.74	1.01 (0.88, 1.17)	0.85
Diabetes duration per 5 years	0.65 (0.62, 0.67)	<0.001	1.00 (0.97, 1.04)	0.85	1.18 (1.13, 1.23)	<0.001
Smoking status						
Never smoked	1		1		1	
Ex-smoker	1.07 (0.95, 1.21)	0.29	1.10 (0.98, 1.24)	0.12	1.24 (1.09, 1.40)	0.001
Current smoker	0.90 (0.79, 1.04)	0.15	1.20 (1.05, 1.38)	0.009	1.00 (0.86, 1.15)	0.96
BMI						
< 25 kg/m <sup>2</sup>	1.20 (1.00, 1.45)	0.056	1.40 (1.17, 1.68)	<0.001	1.08 (0.82, 1.43)	0.58
25–29.9 kg/m <sup>2</sup>	1		1		1	
≥ 30 kg/m <sup>2</sup>	0.78 (0.67, 0.91)	0.002	0.76 (0.66, 0.87)	<0.001	0.94 (0.76, 1.17)	0.57
Bariatric surgery	2.78 (1.82, 4.25)	<0.001	1.36 (0.92, 2.00)	0.13	1.61 (1.08, 2.38)	0.018
Macrovascular complications <sup>††</sup>	0.92 (0.82, 1.03)	0.15	1.11 (0.99, 1.24)	0.075	0.20 (0.18, 0.22)	<0.001
Foot ulcer	0.80 (0.59, 1.09)	0.16	0.74 (0.54, 1.03)	0.071	1.07 (0.76, 1.50)	0.71
Lower limb amputation	0.58 (0.30, 1.15)	0.12	1.34 (0.67, 2.70)	0.41	0.96 (0.47, 1.95)	0.90
Estimated GFR						
> 60 ml/min/1.73 m <sup>2</sup>	1		1		1	
45–59 ml/min/1.73 m <sup>2</sup>	0.95 (0.80, 1.14)	0.59	0.92 (0.78, 1.09)	0.35	1.08 (0.90, 1.28)	0.40
30–44 ml/min/1.73 m <sup>2</sup>	0.78 (0.61, 0.98)	0.04	1.05 (0.83, 1.33)	0.66	0.87 (0.68, 1.12)	0.29
<30 ml/min/1.73 m <sup>2</sup>	0.86 (0.60, 1.24)	0.43	0.99 (0.69, 1.41)	0.94	1.13 (0.76, 1.67)	0.55

GP, general practitioner.

\*Adjusted for all population, GP and practice characteristics included in Tables 2a and 2b. <sup>†</sup>HbA<sub>1c</sub> ≤53 mmol/mol (≤7.0%). <sup>‡</sup>Blood pressure ≤135/80 mmHg/≤140/85 mmHg (with/without antihypertensive medication). <sup>§</sup>LDL cholesterol ≤1.8 mmol/l with cardiovascular disease, or without cardiovascular disease; ≤2.5/≤3.5 mmol/l with/without lipid-lowering medication. <sup>¶</sup>Born in Western Europe or North America. <sup>\*\*</sup>Born in Bangladesh, India, Pakistan or Sri-Lanka. <sup>††</sup>Composite variable of either coronary heart disease, stroke and/or peripheral arterial surgery.

practices, which could only partly be explained by the studied GP and practice characteristics.

We observed that younger people had worse glycaemic control than people aged >60 years. This finding has also been reported in other countries [12,13]. A large observational study in Sweden showed that people with type 2 diabetes aged <55 years had the highest increase in risk of cardiovascular disease and death compared with similarly aged controls [2]. HbA<sub>1c</sub> level outside target range was also a strong predictor for all cardiovascular outcomes [2].

People with macrovascular complications had low odds of attaining the LDL cholesterol target. In the randomized IMPROVE-IT trial, very low LDL cholesterol levels in people with type 2 diabetes and acute coronary syndrome reduced the incidence of cardiovascular outcomes after 7 years follow-up [5]. Thus, intensification of lipid-lowering therapy among individuals with a history of macrovascular disease should be prioritized.

In the present study, obese people were less likely to achieve HbA<sub>1c</sub> and blood pressure targets. In the ADDITION-Cambridge trial, weight loss in the first year following a diabetes diagnosis was associated with reduced incidence of cardiovascular disease [14]. Initial weight loss in people with newly diagnosed type 2 diabetes should therefore be encouraged.

We did not measure adherence to medical or lifestyle advice, motivation for lifestyle changes, individual preferences or hypoglycaemic episodes. Poor medication adherence has been identified as a major cause for the observed efficacy gap in HbA<sub>1c</sub> reduction between RCTs and the real world [15]. A Danish study showed that low frequency of self-monitoring of blood glucose, perceived low treatment efficacy, low adherence, and low primary care utilization were associated with high levels of HbA<sub>1c</sub> and LDL cholesterol [16]. In the multinational IntroDia study approximately one in five people with type 2 diabetes negotiated with their physician to delay additional medication after initial

**Table 2b** Characteristics of general practitioners and practices with adjusted\* odds ratios for the achievement of HbA<sub>1c</sub>, blood pressure or LDL cholesterol targets

Characteristics	HbA <sub>1c</sub> target <sup>†</sup>		Blood pressure target <sup>‡</sup>		LDL cholesterol target <sup>§</sup>	
	OR (95% CI)	P	OR (95% CI)	P	OR (95% CI)	P
GP (N=281)						
Men	1.02 (0.88, 1.19)	0.78	0.91 (0.77, 1.07)	0.23	0.98 (0.85, 1.12)	0.73
Age						
< 40 years	1		1		1	
40–49 years	1.19 (0.93, 1.51)	0.16	1.15 (0.89, 1.48)	0.29	1.05 (0.86, 1.29)	0.61
50–59 years	0.96 (0.73, 1.25)	0.74	1.18 (0.89, 1.56)	0.24	1.13 (0.90, 1.42)	0.28
≥ 60 years	1.03 (0.79, 1.35)	0.81	0.98 (0.74, 1.30)	0.89	1.04 (0.83, 1.31)	0.72
Born outside Norway	1.08 (0.85, 1.36)	0.53	1.03 (0.80, 1.31)	0.84	0.96 (0.79, 1.17)	0.69
Medical education outside Norway	0.96 (0.79, 1.16)	0.64	1.05 (0.85, 1.28)	0.67	0.96 (0.81, 1.13)	0.64
≤ 5 years as a GP in Norway <sup>¶</sup>	1.11 (0.85, 1.45)	0.45	1.05 (0.79, 1.39)	0.76	0.87 (0.69, 1.09)	0.22
Specialist in general practice	1.15 (0.94, 1.41)	0.16	1.04 (0.84, 1.29)	0.70	0.91 (0.77, 1.08)	0.30
Clinical days per week > 3	0.95 (0.76, 1.20)	0.69	0.98 (0.77, 1.24)	0.85	1.06 (0.87, 1.29)	0.57
Number of people with type 2 diabetes per GP						
< 25	1		1		1	
25–49	1.01 (0.79, 1.28)	0.96	1.14 (0.89, 1.46)	0.30	1.08 (0.88, 1.33)	0.47
≥ 50	0.92 (0.70, 1.22)	0.57	1.16 (0.87, 1.55)	0.32	1.04 (0.82, 1.32)	0.73
Total no. of persons on GPs list per day worked each week						
< 225	1.13 (0.90, 1.42)	0.30	0.89 (0.70, 1.12)	0.32	1.10 (0.92, 1.32)	0.29
225–300	1		1		1	
301–375	0.94 (0.79, 1.12)	0.51	0.94 (0.78, 1.13)	0.53	1.02 (0.88, 1.19)	0.77
> 375	1.10 (0.84, 1.43)	0.50	0.82 (0.62, 1.09)	0.17	0.94 (0.75, 1.18)	0.57
User of a structured diabetes form**	1.23 (1.02, 1.47)	0.03	1.09 (0.90, 1.32)	0.40	1.17 (1.01, 1.35)	0.03
Practice (N=77)						
County						
Oslo	1		1		1	
Akershus	1.08 (0.75, 1.56)	0.68	1.10 (0.76, 1.59)	0.62	0.97 (0.77, 1.22)	0.79
Hordaland	1.09 (0.76, 1.56)	0.65	0.93 (0.64, 1.34)	0.69	0.78 (0.62, 0.98)	0.03
Nordland	0.87 (0.61, 1.23)	0.43	0.71 (0.50, 1.01)	0.054	0.75 (0.60, 0.94)	0.013
Rogaland	1.02 (0.74, 1.41)	0.92	1.05 (0.75, 1.46)	0.77	0.78 (0.63, 0.97)	0.02
Number of GPs per office	1.02 (0.96, 1.08)	0.55	0.97 (0.91, 1.03)	0.29	1.01 (0.97, 1.05)	0.59
Number of people on list per full-time ancillary staff <sup>††</sup>						
< 1250	1		1		1	
1250–1750	1.18 (0.86, 1.62)	0.30	0.79 (0.57, 1.09)	0.16	0.90 (0.74, 1.10)	0.31
> 1750	1.09 (0.74, 1.62)	0.66	0.80 (0.54, 1.20)	0.29	0.95 (0.74, 1.21)	0.67
Routines of annual follow-up/reminders	0.97 (0.76, 1.22)	0.78	0.95 (0.75, 1.20)	0.66	1.07 (0.93, 1.24)	0.33

GP, general practitioner.

\*Adjusted for all population, GP and practice characteristics included in Tables 2a and 2b. <sup>†</sup>HbA<sub>1c</sub> ≤ 53 mmol/mol (≤ 7.0%). <sup>‡</sup>Blood pressure ≤ 135/80 mmHg/≤ 140/85 mmHg (with/without antihypertensive medication). <sup>§</sup>LDL cholesterol ≤ 1.8 mmol/l with cardiovascular disease, or without cardiovascular disease; ≤ 2.5/≤ 3.5 mmol/l with/without lipid-lowering medication. <sup>¶</sup>Imputed for 11 GPs. <sup>\*\*</sup>GP defined as a user of the form if used in ≥ 10 people with diabetes or more than 50% of the people with diabetes on the GP's list. <sup>††</sup>Ancillary staff: nurses and medical secretaries.

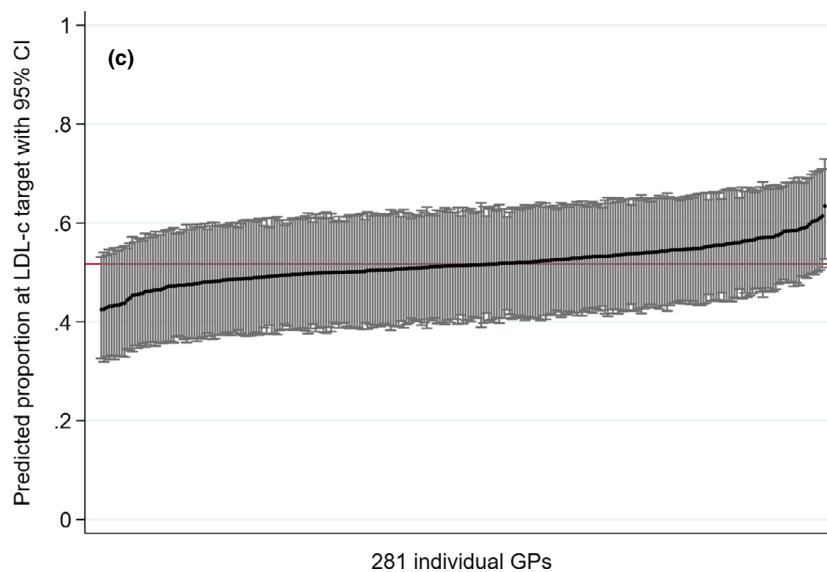
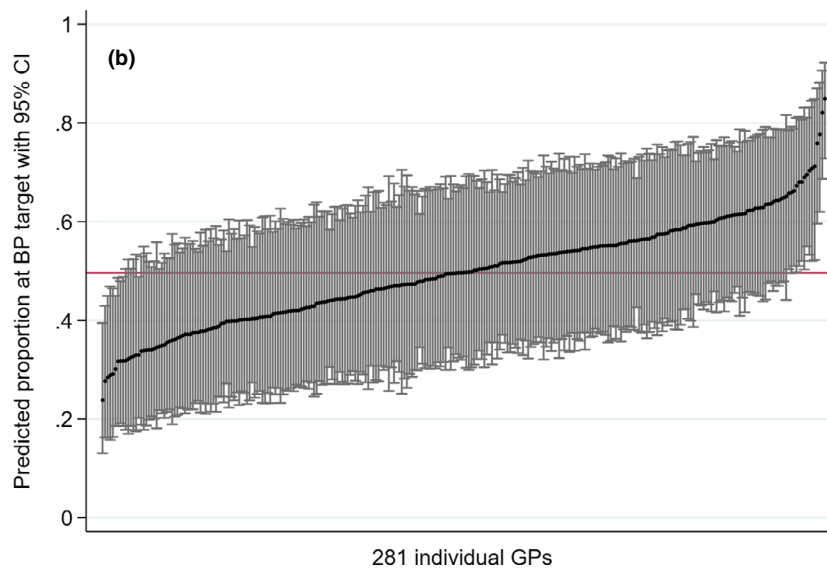
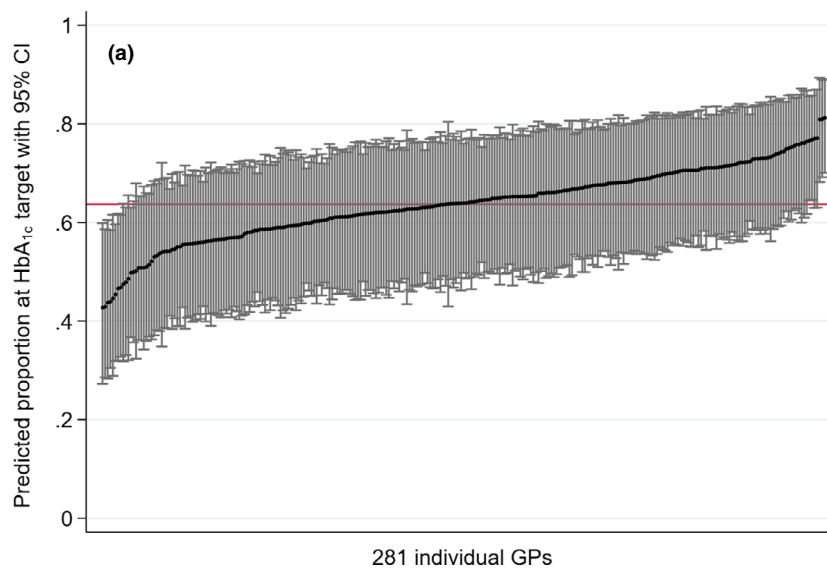
monotherapy, two-thirds successfully [17]. A justifiable source of variation is individualized targets due to multimorbidity and short life expectancy, individual preferences and resources. Personalized treatment leads to a higher achievement of risk factor control [18] and is encouraged in international guidelines [19].

People whose GPs used a structured diabetes form were more likely to achieve the HbA<sub>1c</sub> and LDL cholesterol targets. GP usage of the form was also associated with higher odds of performing microvascular screening procedures (OR 2.65) [6].

Prescribing and intensifying medication is the GP's main tool to influence risk factor control. Due to the cross-sectional design of the present study, we were not able to assess GP prescription patterns. GPs' choices regarding

prescriptions are best studied with longitudinal data. A review of GPs' views on barriers to prescribing insulin found that time constraints, insulin skills, collaboration between primary and secondary care and perception of barriers for the person with diabetes influenced the initiation of insulin [20]. Another review found that delays in initiating or intensifying anti-hyperglycaemic therapy often exceeded 3 years [21]. Clinical inertia can be related to individuals with diabetes, their provider and healthcare system [22].

None of the included practice characteristics were significantly associated with the achievement of targets in the present study; however, with wide CIs we cannot exclude the possibility of some effects. A meta-analysis of RCTs showed no change in HbA<sub>1c</sub> where nurse prescribers supplemented a





**FIGURE 3** Estimated proportions of general practitioners within practices' diabetes population at HbA<sub>1c</sub>, blood pressure and LDL cholesterol targets. Empirical Bayes estimates from three-level models with no covariate adjustments. Red line represents the 50<sup>th</sup> percentile of the estimated proportions. (a) Estimated proportion at HbA<sub>1c</sub> target. (b) Estimated proportion at blood pressure target. (c) Estimated proportion at LDL cholesterol target. HbA<sub>1c</sub> target:  $\leq 53$  mmol/mol ( $\leq 7.0\%$ ); blood pressure target:  $\leq 135/80$  mmHg/ $\leq 140/85$  mmHg (with/without anti-hypertensive medication); LDL cholesterol target:  $\leq 1.8$  mmol/l with cardiovascular disease, or without cardiovascular disease;  $\leq 2.5/\leq 3.5$  mmol/l with/without lipid-lowering medication. GP, general practitioner.

team, however, in people served by nurse prescribers glycaemic control was non-inferior to people served by GPs [23]. In other studies significant and positive associations with diabetes specialized nurses, diabetes team, group education and reduced HbA<sub>1c</sub> have been reported [24,25]. Unfortunately, diabetes specialized nurses are rare in Norwegian general practice. Other studies have shown that multifaceted interventions on multidisciplinary teams resulted in better glycaemic control [26], and benchmarking in the multinational OPTIMISE study increased the number of people achieving blood pressure and LDL cholesterol targets [27].

We describe statistically significant variation in the proportion of people achieving targets among GPs within practices, and correspondingly, moderately sized median ORs and intraclass correlation coefficients. An intraclass correlation coefficient of 3% for clustering at practices was found for the combined achievement of HbA<sub>1c</sub>, blood pressure and cholesterol in a large study from general practice in UK [28]. Three-level studies on treatment targets in general practice are rare; however, one study showed that > 95% of the variance in HbA<sub>1c</sub> outcomes was at the population level, whereas only 2.8% and 1.9% was at the GP and practice level [11]. The variance pattern did not change when five population and three GP characteristics were added to the model. Their model explained 12% of the total variation; it was very similar to the presented full model for HbA<sub>1c</sub> which explained 11% of the variation in our data. In two-level studies, GP or practice variables explained only 4.9%, 5.7% and 2.1% of the total variation in the achievement of HbA<sub>1c</sub>, blood pressure and cholesterol targets [29,30].

The main strength of the present study was its large sample of people with diabetes, and inclusion of a substantial number of GPs within a variety of practice types. This enabled us to describe variation in outcomes at three levels. People with diabetes are registered with one specific GP within one practice and we have assessed several important variables that are not routinely collected and available in other studies. The participants are considered to be representative of the diabetes population in Norway.

Nevertheless, owing to the cross-sectional design, we were unable to draw conclusions regarding causality. Furthermore, analyses are based on a single measurement of each outcome, which may not be representative of the 'true' level of a person's HbA<sub>1c</sub>, blood pressure, or LDL cholesterol. This is mostly a concern with regard to HbA<sub>1c</sub> and for

shorter disease durations, in which there can be substantial fluctuations.

The included variables explain only a small part of the total variation; however, a large proportion of unexplained variation has also been found in several other prediction models [11,29,30]. We lack information on population characteristics regarding diet, physical activity, individual barriers, adherence to therapy, and comorbidities. We would also have liked to assess the effect of good GP communicators and dedicated prescribers, GPs with a special interest in diabetes, and GPs' barriers to treatment.

The use of electronic health records as a data source can result in a considerable amount of missing data; however, in the present study all 9342 medical journals were manually scrutinized by research nurses who supplemented the database with information not captured electronically. Missing data were imputed, including missing measurements for HbA<sub>1c</sub>, blood pressure and LDL cholesterol values, which may protect against bias from data missing not at random [7].

In summary, the clinical management of diabetes is challenging, and only one in five people with diabetes met all three targets for HbA<sub>1c</sub>, blood pressure and LDL cholesterol. The largest variation in the achievement of targets was at the population level. However, the proportion of people reaching target varied among GPs and practices, also after adjusting for case mix. Most of the variation in risk factor control was not explained by the 12 population, 10 GP and four practice characteristics included in the present study. Despite this unexplained variation, the clinical implications of the study are that more attention should be focused on young people, people with obesity and those with macrovascular disease, and the use of a structured diabetes form is recommended.

#### Funding sources

ExtraStiftelsen and the Endocrinology Research Foundation, Stavanger, support the doctoral program of Å.B. and made this publication possible. The data collection for the ROSA 4 study was supported financially with grants from the Norwegian Diabetes Association, a consortium of six pharmaceutical firms (AstraZeneca, Boehringer Ingelheim, Eli Lilly, MSD, Novo Nordisk and Sanofi Aventis), Helse Nord, the Endocrinology Research Foundation, Stavanger, and the University of Oslo. The funders had no involvement in the study design, analysis and interpretation of the data, or in the

writing of the report and revision of the paper. The contents of this publication are solely the responsibility of the authors.

### Competing interests

J.G.C. and Å.B. have received lecturing fees from AstraZeneca, Boehringer Ingelheim, Eli Lilly, Novo Nordisk, and Sanofi Aventis. J.G.C. has also received lecture fees from GSK and MSD.

### Acknowledgements

The authors acknowledge the participating GPs and practices and the research nurses who collected the data. They would also like to thank Tone Vonheim Madsen, diabetes nurse, Noklus, Anh Thi Tran, MD, PhD and Bjørn Gjelsvik, MD, PhD, both University of Oslo, who conceived the study protocol and contributed to the data collection. In addition, Anh Thi Tran and Kjersti Nøkleby, MD, University of Oslo quality checked the data. Kari Hølland, librarian at the University of Stavanger, contributed with literature research. Finally, Anastasia Ushakova, PhD, Section of Biostatistics, Stavanger University Hospital, supplied Fig. 2.

### References

- Rawshani A, Rawshani A, Franzen S, Eliasson B, Svensson AM, Miftaraj M *et al.* Mortality and Cardiovascular Disease in Type 1 and Type 2 Diabetes. *N Engl J Med* 2017; **376**: 1407–1418.
- Rawshani A, Rawshani A, Franzen S, Sattar N, Eliasson B, Svensson AM *et al.* Risk Factors, Mortality, and Cardiovascular Outcomes in Patients with Type 2 Diabetes. *N Engl J Med* 2018; **379**: 633–644.
- Huang CJ, Wang WT, Sung SH, Chen CH, Lip GYH, Cheng HM *et al.* Blood glucose reduction by diabetic drugs with minimal hypoglycaemia risk for cardiovascular outcomes: Evidence from meta-regression analysis of randomized controlled trials. *Diabetes Obes Metab* 2018; **20**: 2131–2139.
- Aronow WS, Shamliyan TA. Blood pressure targets for hypertension in patients with type 2 diabetes. *Ann Transl Med* 2018; **6**: 199.
- Bonaca MP, Gutierrez JA, Cannon C, Giugliano R, Blazing M, Park J-G *et al.* Polyvascular disease, type 2 diabetes, and long-term vascular risk: a secondary analysis of the IMPROVE-IT trial. *Lancet Diabetes Endocrinol* 2018; **6**: 934–943.
- Bakke A, Tran AT, Dalen I, Cooper JG, Lovaas KF, Jennum AK *et al.* Population, general practitioner and practice characteristics are associated with screening procedures for microvascular complications in Type 2 diabetes care in Norway. *Diabet Med* 2018; <https://doi.org/10.1111/dme.13842>. [Epub ahead of print].
- van Buuren S. *Flexible Imputation of Missing Data*. 2nd edn. Boca Raton: Chapman and Hall/CRC Interdisciplinary Statistics, 2018.
- Nakagawa S, Schielzeth H. A general and simple method for obtaining R from generalized linear mixed-effects models. *Methods in Ecology and Evolution* 2013; **4**: 133–142.
- Austin PC, Merlo J. Intermediate and advanced topics in multilevel logistic regression analysis. *Stat Med* 2017; **36**: 3257–3277.
- Hedges LV, Hedberg EC, Kuyper AM. The Variance of Intraclass Correlations in Three- and Four-Level Models. *Educ Psychol Meas* 2012; **72**: 893–909.
- O'Connor PJ, Rush WA, Davidson G, Louis TA, Solberg LI, Crain L *et al.* Variation in quality of diabetes care at the levels of patient, physician, and clinic. *Prev Chronic Dis* 2008; **5**: A15.
- Al Mansari A, Obeid Y, Islam N, Fariduddin M, Hassoun A, Djaballah K *et al.* GOAL study: clinical and non-clinical predictive factors for achieving glycemic control in people with type 2 diabetes in real clinical practice. *BMJ Open Diabetes Res Care* 2018; **6**: e000519.
- Hertroijs DFL, Elissen AMJ, Brouwers M, Schaper NC, Ruwaard D. Relevant patient characteristics for guiding tailored integrated diabetes primary care: a systematic review. *Prim Health Care Res Dev* 2018; **19**: 424–447.
- Strelitz J, Ahern AL, Long GH, Hare MJL, Irving G, Boothby CE *et al.* Moderate weight change following diabetes diagnosis and 10 year incidence of cardiovascular disease and mortality. *Diabetologia* 2019; **62**: 1391–1402.
- Edelman SV, Polonsky WH. Type 2 Diabetes in the Real World: The Elusive Nature of Glycemic Control. *Diabetes Care* 2017; **40**: 1425–1432.
- von Arx LB, Gydesen H, Skovlund S. Treatment beliefs, health behaviors and their association with treatment outcome in type 2 diabetes. *BMJ Open Diabetes Res Care* 2016; **4**: e000166.
- Edelman S, Belton A, Down S, Alzaid A, Capehorn M, Gamerman V *et al.* Physician–patient communication at prescription of an additional oral drug for type 2 diabetes and its links to patient outcomes – new findings from the global IntroDia® study. *Diabetes Res Clin Pract* 2019; **149**: 89–97.
- Boels AM, Hart HE, Rutten GE, Vos RC. Personalised treatment targets in type 2 diabetes patients: The Dutch approach. *Prim Care Diabetes* 2017; **11**: 71–77.
- Introduction: Standards of Medical Care in Diabetes—2019. *Diabetes Care* 2019; **42**:S1–S2.
- Ellis K, Mulnier H, Forbes A. Perceptions of insulin use in type 2 diabetes in primary care: a thematic synthesis. *BMC Fam Pract* 2018; **19**: 70.
- Blonde L, Aschner P, Bailey C, Ji L, Leiter LA, Matthaehi S. Gaps and barriers in the control of blood glucose in people with type 2 diabetes. *Diab Vasc Dis Res* 2017; **14**: 172–183.
- Okemah J, Peng J, Quinones M. Addressing Clinical Inertia in Type 2 Diabetes Mellitus: A Review. *Adv Ther* 2018; **35**: 1735–1745.
- Tabesh M, Magliano DJ, Koye DN, Shaw JE. The effect of nurse prescribers on glycaemic control in type 2 diabetes: A systematic review and meta-analysis. *Int J Nurs Stud* 2018; **78**: 37–43.
- Husdal R, Rosenblad A, Leksell J, Eliasson B, Jansson S, Jerden L *et al.* Resources and organisation in primary health care are associated with HbA1c level: A nationwide study of 230958 people with Type 2 diabetes mellitus. *Prim Care Diabetes* 2018; **12**: 23–33.
- Daly B, Tian CJL, Scragg RKR. Effect of nurse-led randomised control trials on cardiovascular risk factors and HbA1c in diabetes patients: A meta-analysis. *Diabetes Res Clin Pract* 2017; **131**: 187–199.
- Seidu S, Achana FA, Gray LJ, Davies MJ, Khunti K. Effects of glucose-lowering and multifactorial interventions on cardiovascular and mortality outcomes: a meta-analysis of randomized control trials. *Diabet Med* 2016; **33**: 280–289.
- Hermans MP, Elisaf M, Michel G, Muls E, Nobels F, Vandenberghe H *et al.* Benchmarking is associated with improved quality of care in type 2 diabetes: the OPTIMISE randomized, controlled trial. *Diabetes Care* 2013; **36**: 3388–3395.
- Willis TA, West R, Rushforth B, Stokes T, Glidewell L, Carder P *et al.* Variations in achievement of evidence-based, high-impact quality indicators in general practice: An observational study. *PLoS One* 2017; **12**: e0177949.
- Adolfsson ET, Smide B, Rosenblad A, Wikblad K. Does patient education facilitate diabetic patients' possibilities to reach national

treatment targets? A national survey in Swedish primary health-care. *Scand J Prim Health Care* 2009; 27: 91–96.

- 30 Tuerk PW, Mueller M, Egede LE. Estimating physician effects on glycemic control in the treatment of diabetes: methods, effects sizes, and implications for treatment policy. *Diabetes Care* 2008; 31: 869–873.

### Supporting Information

Additional supporting information may be found online in the Supporting Information section at the end of the article.

**Table S1a.** Characteristics of people with type 2 diabetes with adjusted predicted mean difference for the achievement of HbA1c, blood pressure or LDL cholesterol target.

**Table S1b.** Characteristics of general practitioners with adjusted predicted mean difference for the achievement of HbA1c, blood pressure or LDL cholesterol targets.

**Table S1c.** Characteristics of practices with adjusted predicted mean difference for the achievement of HbA1c, blood pressure or LDL cholesterol targets.

**Table S2a.** Characteristics of people with type 2 diabetes and adjusted predicted probabilities for the achievement of HbA1c, blood pressure or LDL-cholesterol targets.

**Table S2b.** Characteristics of general practitioners with adjusted predicted probabilities for the achievement of HbA1c, blood pressure or LDL cholesterol target.

**Table S2c.** Characteristics of practices with adjusted predicted probabilities for the achievement of HbA1c, blood pressure or LDL cholesterol target.

**Table S3.** Variation among general practitioners ( $n=281$ ) and practices ( $n=77$ ) in the achievement of HbA1c, blood pressure and LDL cholesterol treatment targets in 9342 people with type 2 diabetes.